

TUBA1B Antibody



PACO46346

Product Information

Size:

50ug

Reactivity:

Human, Mouse

Source:

Rabbit

Isotype:

IgG

Applications:

ELISA, WB, IHC, IF

Recommended dilutions:

ELISA:1:2000-1:10000, WB:1:1000-1:5000,
IHC:1:20-1:200, IF:1:50-1:200

Protein Background:

Tubulin is the major constituent of microtubules. It binds two moles of GTP, one at an exchangeable site on the beta chain and one at a non-exchangeable site on the alpha chain.

Gene ID:

TUBA1B

Uniprot

P68363

Synonyms:

Tubulin alpha-1B chain (Alpha-tubulin ubiquitous) (Tubulin K-alpha-1) (Tubulin alpha-ubiquitous chain) [Cleaved into: Detyrosinated tubulin alpha-1B chain], TUBA1B

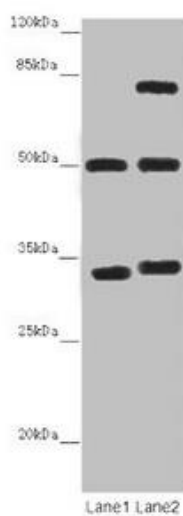
Immunogen:

Recombinant Human Tubulin alpha-1B chain protein (29-310AA).

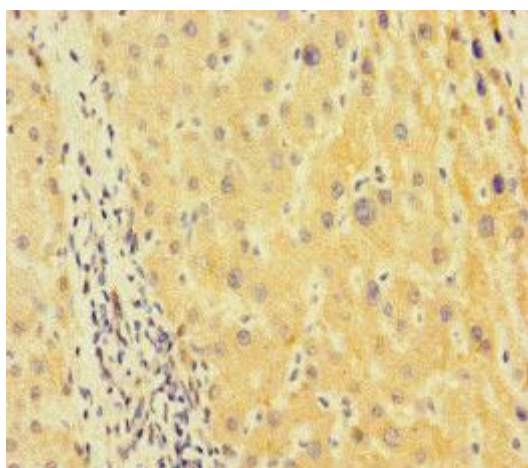
Storage:

Preservative: 0.03% Proclin 300. Constituents: 50% Glycerol, 0.01M PBS, PH 7.4

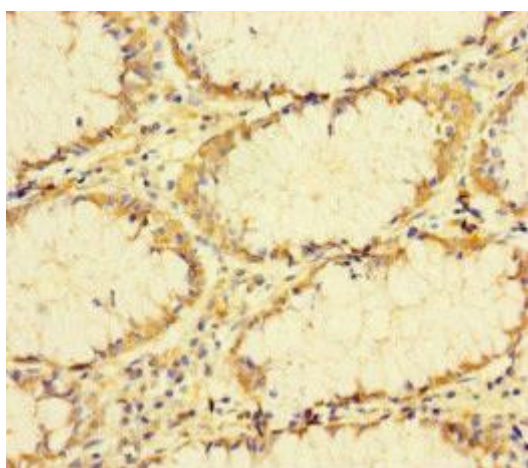
Product Images



Western blot. All lanes: TUBA1B antibody at 12 μ g/ml. Lane 1: Mouse brain tissue. Lane 2: Mouse liver tissue. Secondary: Goat polyclonal to rabbit IgG at 1/10000 dilution. Predicted band size: 51, 38 kDa. Observed band size: 51, 34, 75 kDa.



Immunohistochemistry of paraffin-embedded human liver cancer using PACO46346 at dilution of 1:100.



Immunohistochemistry of paraffin-embedded human colon cancer using PACO46346 at dilution of 1:100.