

RAC1 Antibody



PACO46350

Product Information

Size:

50ug

Reactivity:

Human

Source:

Rabbit

Isotype:

IgG

Applications:

ELISA, IHC, IF

Recommended dilutions:

ELISA:1:2000-1:10000, IHC:1:100-1:1200,
IF:1:200-1:500

Protein Background:

Gene ID:

RAC1

Uniprot

P63000

Synonyms:

Ras-related C3 botulinum toxin substrate 1 (Cell migration-inducing gene 5 protein)
(Ras-like protein TC25) (p21-Rac1), RAC1, TC25

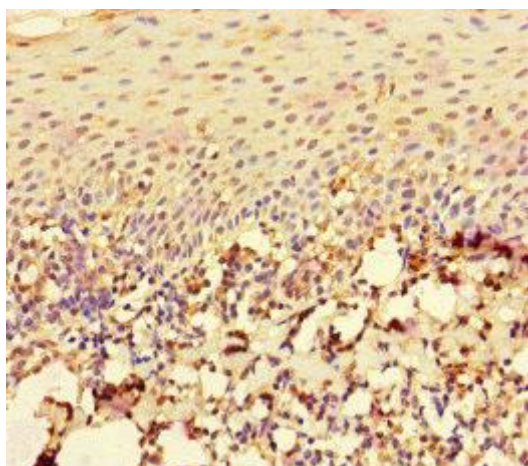
Immunogen:

Recombinant Human Ras-related C3 botulinum toxin substrate 1 protein (11-185AA).

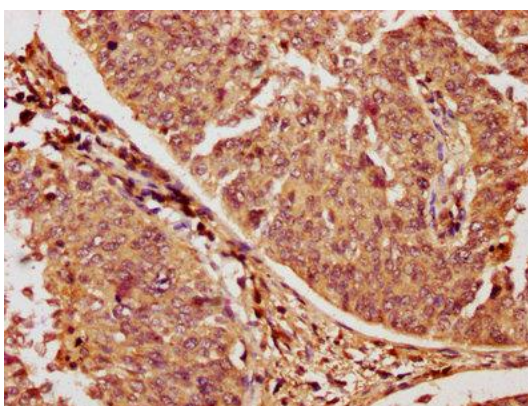
Storage:

Preservative: 0.03% Proclin 300. Constituents: 50% Glycerol, 0.01M PBS, PH 7.4

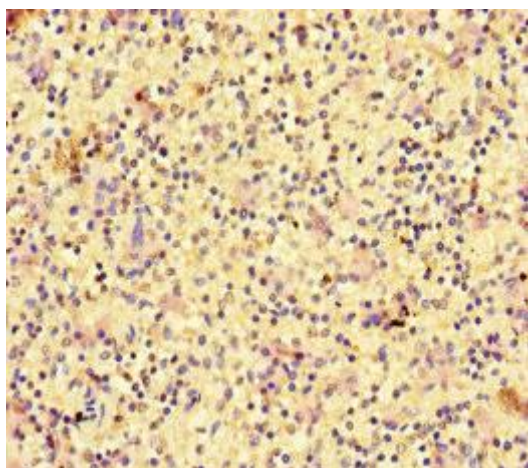
Product Images



Immunohistochemistry of paraffin-embedded human tonsil tissue using PACO46350 at dilution of 1:100.



IHC image of PACO46350 diluted at 1:1200 and staining in paraffin-embedded human cervical cancer performed on a Leica Bond™ system. After dewaxing and hydration, antigen retrieval was mediated by high pressure in a citrate buffer (pH 6.0). Section was blocked with 10% normal goat serum 30min at RT. Then primary antibody (1% BSA) was incubated at 4°C overnight. The primary is detected by a biotinylated secondary antibody and visualized using an HRP conjugated SP system.



Immunohistochemistry of paraffin-embedded human spleen tissue using PACO46350 at dilution of 1:100.