

Product Information

Size:

50ug

Reactivity:

Human

Source:

Rabbit

Isotype:

IgG

Applications:

ELISA, IHC, IF

Recommended dilutions:

ELISA:1:2000-1:10000, IHC:1:20-1:200,
IF:1:50-1:200

Protein Background:

Cytokine that may play a role in innate and adaptive immune responses. It induces various cytokines such as TNFA/TNF-alpha and IL8. It activates typical cytokine signal pathways of NF-kappa-B and p38 MAPK.

Gene ID:

IL32

Uniprot

P24001

Synonyms:

Interleukin-32 (IL-32) (Natural killer cells protein 4) (Tumor necrosis factor alpha-inducing factor), IL32, NK4 TAIF

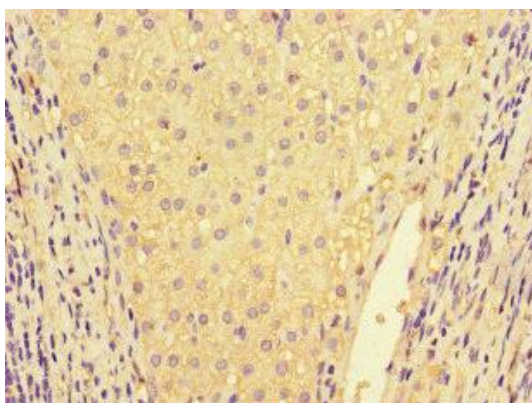
Immunogen:

Recombinant Human Interleukin-32 protein (31-234AA).

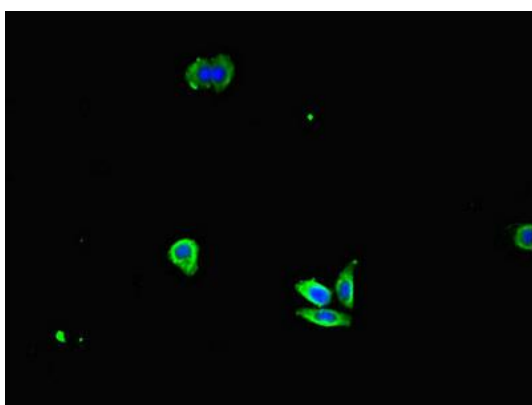
Storage:

Preservative: 0.03% Proclin 300. Constituents: 50% Glycerol, 0.01M PBS, PH 7.4

Product Images



Immunohistochemistry of paraffin-embedded human liver cancer using PACO46378 at dilution of 1:100.



Immunofluorescent analysis of HepG2 cells using PACO46378 at dilution of 1:100 and Alexa Fluor 488-conjugated AffiniPure Goat Anti-Rabbit IgG(H+L).