

PACO46430

Product Information

Size:

50ug

Reactivity:

Human, Mouse

Source:

Rabbit

Isotype:

IgG

Applications:

ELISA, WB, IHC, IF

Recommended dilutions:

ELISA:1:2000-1:10000, WB:1:1000-1:5000,
IHC:1:20-1:200, IF:1:50-1:200

Protein Background:

Key enzyme in the regulation of glycerol uptake and metabolism.

Gene ID:

GK

Uniprot

P32189

Synonyms:

Glycerol kinase (GK) (Glycerokinase) (EC 2.7.1.30) (ATP: glycerol 3-phosphotransferase), GK

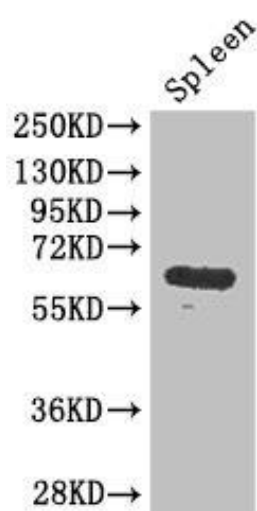
Immunogen:

Recombinant Human Glycerol kinase protein (346-509AA).

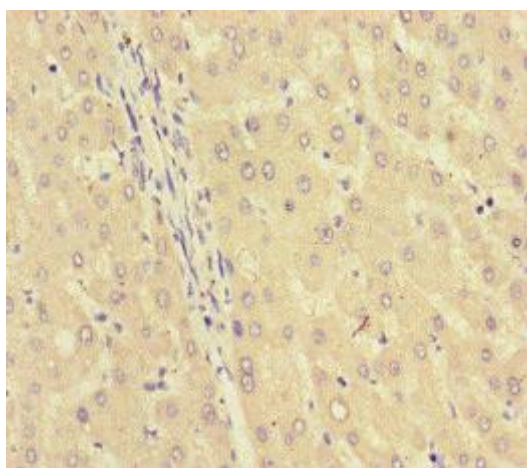
Storage:

Preservative: 0.03% Proclin 300. Constituents: 50% Glycerol, 0.01M PBS, PH 7.4

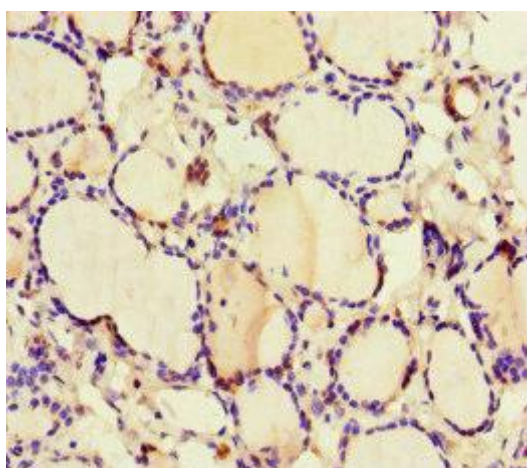
Product Images



Western Blot. Positive WB detected in: Mouse spleen tissue. All lanes: GK antibody at 3 μ g/ml. Secondary. Goat polyclonal to rabbit IgG at 1/50000 dilution. Predicted band size: 62, 58, 61, 59 kDa. Observed band size: 62 kDa.



Immunohistochemistry of paraffin-embedded human liver tissue using PACO46430 at dilution of 1:100.



Immunohistochemistry of paraffin-embedded human thyroid tissue using PACO46430 at dilution of 1:100.