

# NRXN1 Antibody



PACO46446

---

## Product Information

**Size:**

50ug

**Reactivity:**

Human, Mouse

**Source:**

Rabbit

**Isotype:**

IgG

**Applications:**

ELISA, WB, IF

**Recommended dilutions:**

ELISA:1:2000-1:10000, WB:1:2000-1:5000,  
IF:1:50-1:200

**Protein Background:**

Neuronal cell surface protein that may be involved in cell recognition and cell adhesion by forming intracellular junctions through binding to neuroligins. May play a role in formation or maintenance of synaptic junctions. May mediate intracellular signaling. May play a role in angiogenesis.

**Gene ID:**

NRXN1

**Uniprot**

P58400

**Synonyms:**

Neurexin-1-beta (Neurexin I-beta), NRXN1

**Immunogen:**

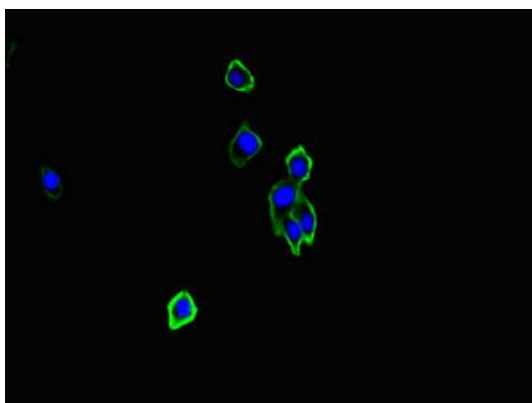
Recombinant Human Neurexin-1-&beta; protein (184-363AA).

**Storage:**

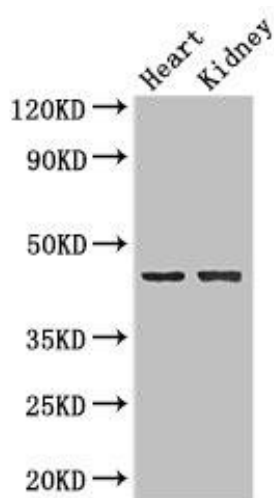
Preservative: 0.03% Proclin 300. Constituents: 50% Glycerol, 0.01M PBS, PH 7.4

## Product Images

---



Immunofluorescent analysis of HepG2 cells using PACO46446 at dilution of 1:100 and Alexa Fluor 488-conjugated AffiniPure Goat Anti-Rabbit IgG(H+L).



Western Blot. Positive WB detected in: Mouse heart tissue, Mouse kidney tissue. All lanes: NRXN1 antibody at 2 $\mu$ g/ml. Secondary. Goat polyclonal to rabbit IgG at 1/50000 dilution. Predicted band size: 47, 51, 162, 165, 170, 16 kDa. Observed band size: 47 kDa.