

FSTL1 Antibody



PACO46478

Product Information

Size:

50ug

Reactivity:

Human

Source:

Rabbit

Isotype:

IgG

Applications:

ELISA, IHC, IF

Recommended dilutions:

ELISA:1:2000-1:10000, IHC:1:20-1:200,
IF:1:50-1:200

Protein Background:

May modulate the action of some growth factors on cell proliferation and differentiation. Binds heparin.

Gene ID:

FSTL1

Uniprot

Q12841

Synonyms:

Follistatin-related protein 1 (Follistatin-like protein 1), FSTL1, FRP

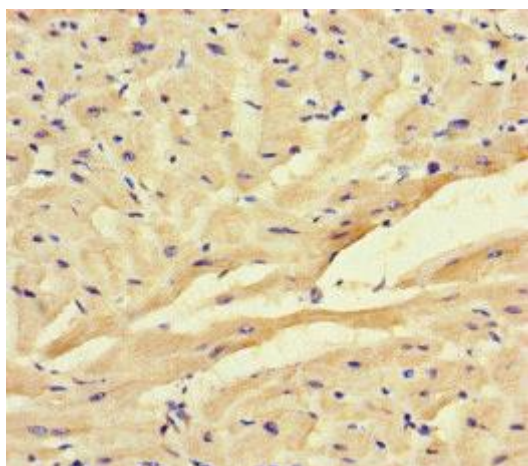
Immunogen:

Recombinant Human Follistatin-related protein 1 protein (176-285AA).

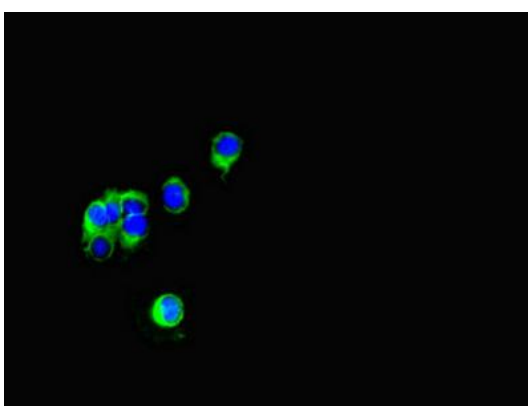
Storage:

Preservative: 0.03% Proclin 300. Constituents: 50% Glycerol, 0.01M PBS, PH 7.4

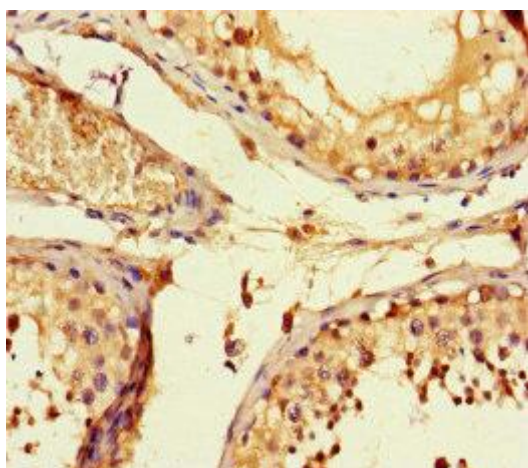
Product Images



Immunohistochemistry of paraffin-embedded human heart tissue using PACO46478 at dilution of 1:100.



Immunofluorescent analysis of HeLa cells using PACO46478 at dilution of 1:100 and Alexa Fluor 488-conjugated AffiniPure Goat Anti-Rabbit IgG(H+L).



Immunohistochemistry of paraffin-embedded human testis tissue using PACO46478 at dilution of 1:100.