

TERF2 Antibody



PACO46530

Product Information

Size:

50ug

Reactivity:

Human, Mouse

Source:

Rabbit

Isotype:

IgG

Applications:

ELISA, WB, IHC, IF

Recommended dilutions:

ELISA:1:2000-1:10000, WB:1:1000-1:5000,
IHC:1:20-1:200, IF:1:50-1:200

Protein Background:

Gene ID:

TERF2

Uniprot

Q15554

Synonyms:

Telomeric repeat-binding factor 2 (TTAGGG repeat-binding factor 2) (Telomeric DNA-binding protein), TERF2, TRBF2 TRF2

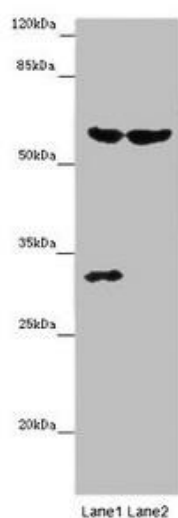
Immunogen:

Recombinant Human Telomeric repeat-binding factor 2 protein (78-238AA).

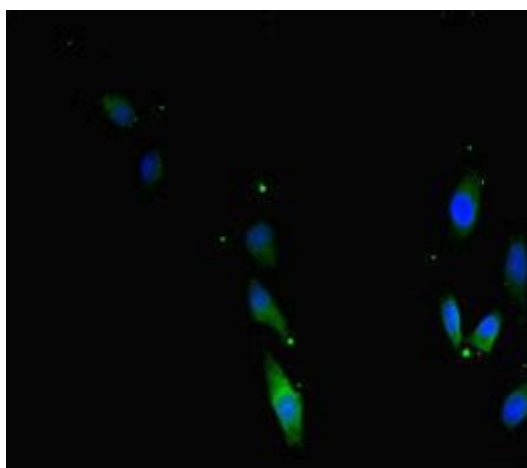
Storage:

Preservative: 0.03% Proclin 300. Constituents: 50% Glycerol, 0.01M PBS, PH 7.4

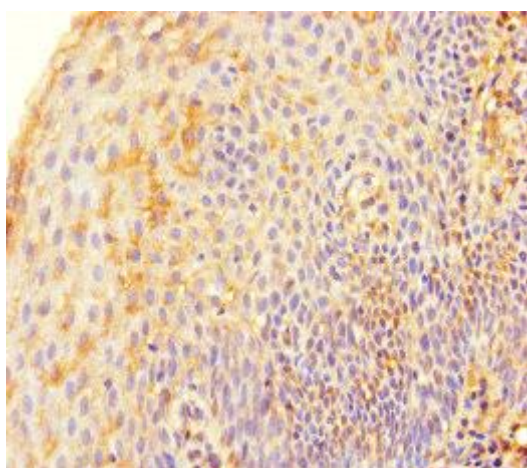
Product Images



Western blot. All lanes: TERF2 antibody at 14 μ g/ml. Lane 1: Mouse thymus tissue. Lane 2: MCF-7 whole cell lysate. Secondary. Goat polyclonal to rabbit IgG at 1/10000 dilution. Predicted band size: 60, 33 kDa. Observed band size: 60, 31 kDa.



Immunofluorescent analysis of HeLa cells using PACO46530 at dilution of 1:100 and Alexa Fluor 488-conjugated AffiniPure Goat Anti-Rabbit IgG(H+L).



Immunohistochemistry of paraffin-embedded human tonsil tissue using PACO46530 at dilution of 1:100.