

TSBP1 Antibody



PACO46590

Product Information

Size:

50ug

Reactivity:

Human, Mouse

Source:

Rabbit

Isotype:

IgG

Applications:

ELISA, WB, IHC, IF

Recommended dilutions:

ELISA:1:2000-1:10000, WB:1:2000-1:5000,
IHC:1:20-1:200, IF:1:50-1:200

Protein Background:

nucleus.

Gene ID:

TSBP1

Uniprot

Q5SRN2

Synonyms:

Testis-expressed basic protein 1(Uncharacterized protein C6orf10), TSBP1, C6orf10

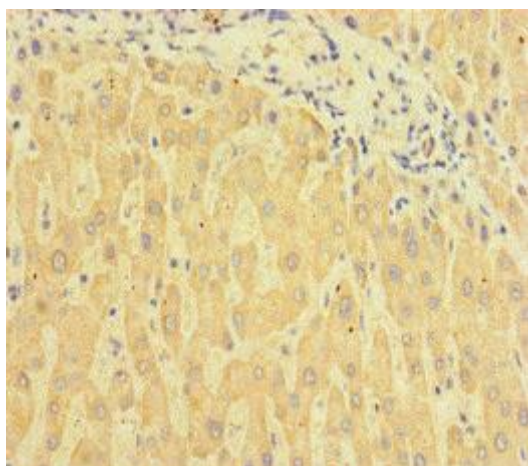
Immunogen:

Recombinant Human Testis-expressed basic protein 1 protein (239-476AA).

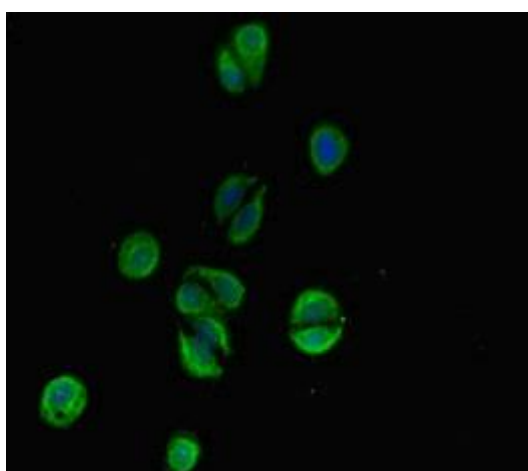
Storage:

Preservative: 0.03% Proclin 300. Constituents: 50% Glycerol, 0.01M PBS, PH 7.4

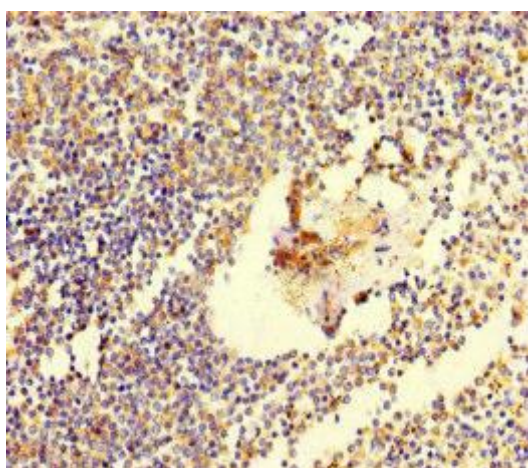
Product Images



Immunohistochemistry of paraffin-embedded human liver tissue using PACO46590 at dilution of 1:100.



Immunofluorescent analysis of HepG2 cells using PACO46590 at dilution of 1:100 and Alexa Fluor 488-conjugated AffiniPure Goat Anti-Rabbit IgG(H+L).



Immunohistochemistry of paraffin-embedded human spleen tissue using PACO46590 at dilution of 1:100.