

# DCAF8 Antibody



PACO46602

---

## Product Information

**Size:**

50ug

**Reactivity:**

Human, Mouse

**Source:**

Rabbit

**Isotype:**

IgG

**Applications:**

ELISA, WB, IHC

**Recommended dilutions:**

ELISA:1:2000-1:10000, WB:1:2000-1:5000,  
IHC:1:20-1:200

**Protein Background:**

May function as a substrate receptor for CUL4-DDB1 E3 ubiquitin-protein ligase complex.

**Gene ID:**

DCAF8

**Uniprot**

Q5TAQ9

**Synonyms:**

DDB1- and CUL4-associated factor 8 (WD repeat-containing protein 42A), DCAF8, H326  
WDR42A

**Immunogen:**

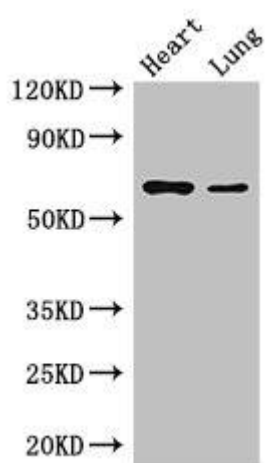
Recombinant Human DDB1- and CUL4-associated factor 8 protein (1-135AA).

**Storage:**

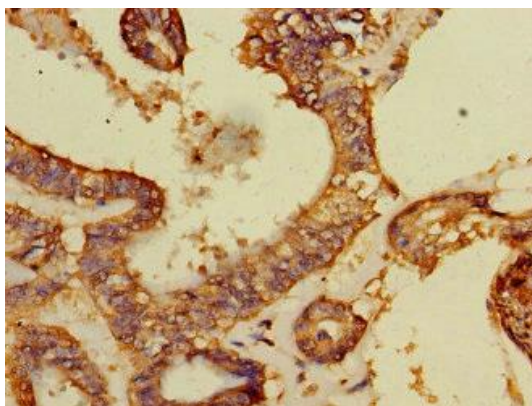
Preservative: 0.03% Proclin 300. Constituents: 50% Glycerol, 0.01M PBS, PH 7.4

## Product Images

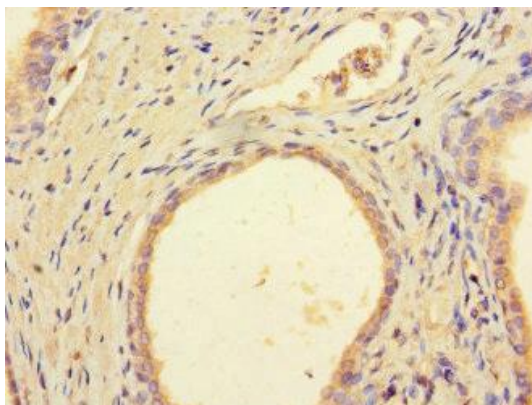
---



Western Blot. Positive WB detected in: Mouse heart tissue, Mouse lung tissue. All lanes: DCAF8 antibody at 3.5 $\mu$ g/ml. Secondary. Goat polyclonal to rabbit IgG at 1/50000 dilution. Predicted band size: 67, 31 kDa. Observed band size: 67 kDa.



Immunohistochemistry of paraffin-embedded human endometrial cancer using PACO46602 at dilution of 1:100.



Immunohistochemistry of paraffin-embedded human prostate cancer using PACO46602 at dilution of 1:100.