

RUNX1T1 Antibody



PACO46606

Product Information

Size:

50ug

Reactivity:

Human

Source:

Rabbit

Isotype:

IgG

Applications:

ELISA, WB, IHC

Recommended dilutions:

ELISA:1:2000-1:10000, WB:1:2000-1:10000,
IHC:1:20-1:200

Protein Background:

Transcriptional corepressor which facilitates transcriptional repression via its association with DNA-binding transcription factors and recruitment of other corepressors and histone-modifying enzymes. Can repress the expression of MMP7 in a ZBTB33-dependent manner. Can repress transactivation mediated by TCF12. Acts as a negative regulator of adipogenesis.

Gene ID:

RUNX1T1

Uniprot

Q06455

Synonyms:

Protein CBFA2T1 (Cyclin-D-related protein) (Eight twenty one protein) (Protein ETO) (Protein MTG8) (Zinc finger MYND domain-containing protein 2), RUNX1T1, AML1T1, CBFA2T1 CDR ETO MTG8 ZMYND2

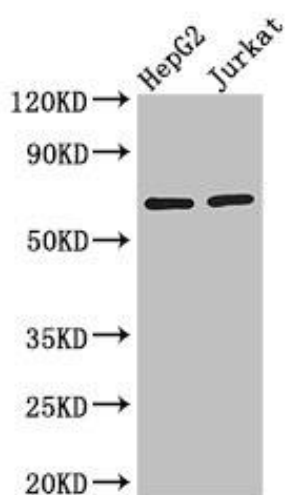
Immunogen:

Recombinant Human Protein CBFA2T1 protein (416-525AA).

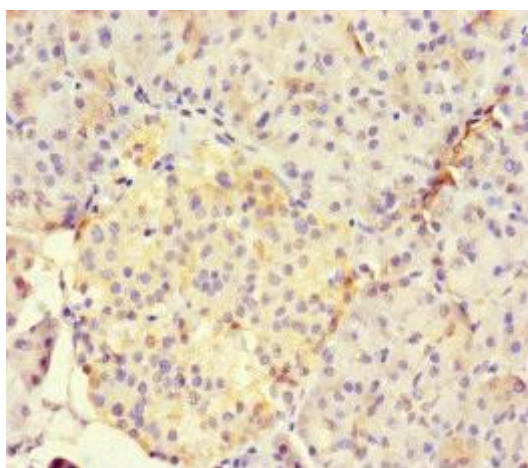
Storage:

Preservative: 0.03% Proclin 300. Constituents: 50% Glycerol, 0.01M PBS, PH 7.4

Product Images



Western Blot. Positive WB detected in: HepG2 whole cell lysate, Jurkat whole cell lysate. All lanes: RUNX1T1 antibody at 2.8 μ g/ml. Secondary. Goat polyclonal to rabbit IgG at 1/50000 dilution. Predicted band size: 68, 65, 69, 64, 49, 45 kDa. Observed band size: 68 kDa.



Immunohistochemistry of paraffin-embedded human pancreatic tissue using PACO46606 at dilution of 1:100.