

# NCR3LG1 Antibody



PACO46638

---

## Product Information

**Size:**

50ug

**Reactivity:**

Human, Mouse

**Source:**

Rabbit

**Isotype:**

IgG

**Applications:**

ELISA, WB, IHC, IF

**Recommended dilutions:**

ELISA:1:2000-1:10000, WB:1:1000-1:5000,  
IHC:1:20-1:200, IF:1:50-1:200

**Protein Background:**

Triggers NCR3-dependent natural killer cell activation.

**Gene ID:**

NCR3LG1

**Uniprot**

Q68D85

**Synonyms:**

Natural cytotoxicity triggering receptor 3 ligand 1 (B7 homolog 6) (B7-H6), NCR3LG1, B7H6

**Immunogen:**

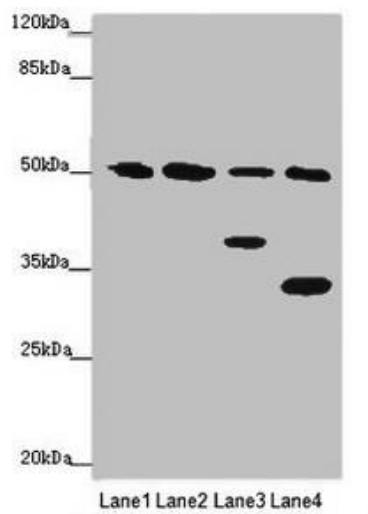
Recombinant Human Natural cytotoxicity triggering receptor 3 ligand 1 protein (25-262AA).

**Storage:**

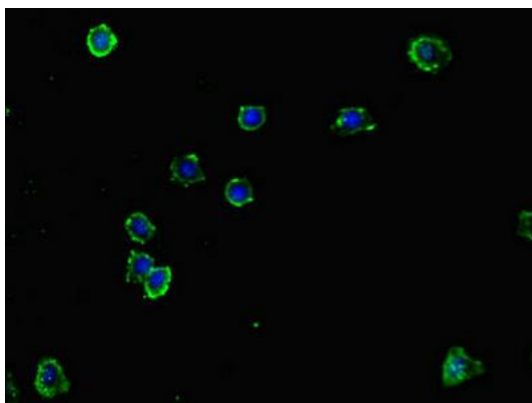
Preservative: 0.03% Proclin 300. Constituents: 50% Glycerol, 0.01M PBS, PH 7.4

## Product Images

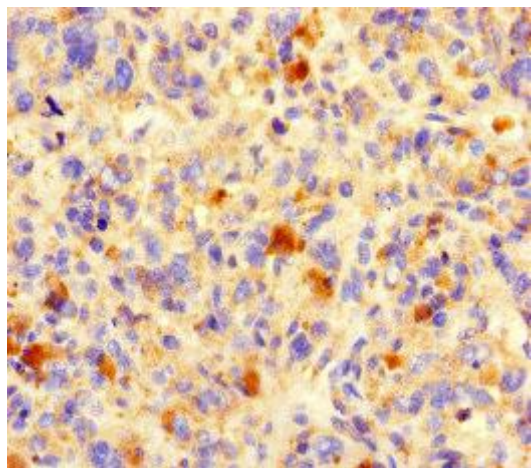
---



Western blot. All lanes: B7H6 antibody at 2  $\mu$ g/ml. Lane 1: Mouse heart tissue. Lane 2: Mouse liver tissue. Lane 3: Mouse brain tissue. Lane 4: Hela whole cell lysate. Secondary. Goat polyclonal to rabbit IgG at 1/10000 dilution. Predicted band size: 51 kDa. Observed band size: 51, 38, 32 kDa.



Immunofluorescent analysis of HepG2 cells using PACO46638 at dilution of 1:100 and Alexa Fluor 488-conjugated AffiniPure Goat Anti-Rabbit IgG(H+L).



Immunohistochemistry of paraffin-embedded human melanoma using PACO46638 at dilution of 1:100.