

CLEC9A Antibody



PACO46642

Product Information

Size:

50ug

Reactivity:

Human, Mouse

Source:

Rabbit

Isotype:

IgG

Applications:

ELISA, WB, IF

Recommended dilutions:

ELISA:1:2000-1:10000, WB:1:1000-1:5000,
IF:1:50-1:200

Protein Background:

Functions as an endocytic receptor on a small subset of myeloid cells specialized for the uptake and processing of material from dead cells. Recognizes filamentous form of actin in association with particular actin-binding domains of cytoskeletal proteins, including spectrin, exposed when cell membranes are damaged, and mediate the cross-presentation of dead-cell associated antigens in a Syk-dependent manner.

Gene ID:

CLEC9A

Uniprot

Q6UXN8

Synonyms:

C-type lectin domain family 9 member A, CLEC9A

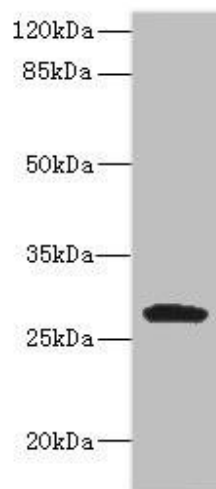
Immunogen:

Recombinant Human C-type lectin domain family 9 member A protein (103-214AA).

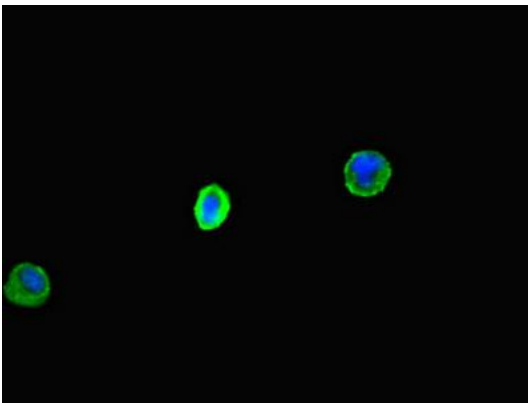
Storage:

Preservative: 0.03% Proclin 300. Constituents: 50% Glycerol, 0.01M PBS, PH 7.4

Product Images



Western blot. All lanes: CLEC9A antibody IgG at 8 μ g/ml + Mouse kidney tissue. Secondary. Goat polyclonal to rabbit IgG at 1/10000 dilution. Predicted band size: 27 kDa. Observed band size: 27 kDa.



Immunofluorescent analysis of MCF-7 cells using PACO46642 at dilution of 1:100 and Alexa Fluor 488-conjugated AffiniPure Goat Anti-Rabbit IgG(H+L).