

SLC30A10 Antibody



PACO46666

Product Information

Size:

50ug

Reactivity:

Human, Mouse

Source:

Rabbit

Isotype:

IgG

Applications:

ELISA, WB, IHC, IF

Recommended dilutions:

ELISA:1:2000-1:10000, WB:1:500-1:5000,
IHC:1:100-1:500, IF:1:50-1:500

Protein Background:

Plays a pivotal role in manganese transport. Manganese is an essential cation for the function of several enzymes, including some crucially important for the metabolism of neurotransmitters and other neuronal metabolic pathways.

Gene ID:

SLC30A10

Uniprot

Q6XR72

Synonyms:

Zinc transporter 10 (ZnT-10) (Manganese transporter SLC30A10) (Solute carrier family 30 member 10), SLC30A10, ZNT10 ZNT8

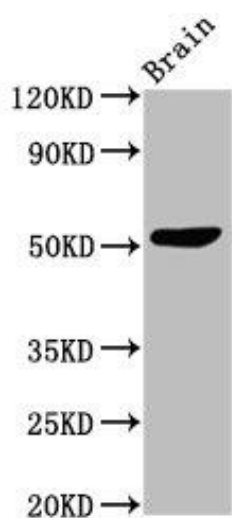
Immunogen:

Recombinant Human Zinc transporter 10 protein (58-278AA).

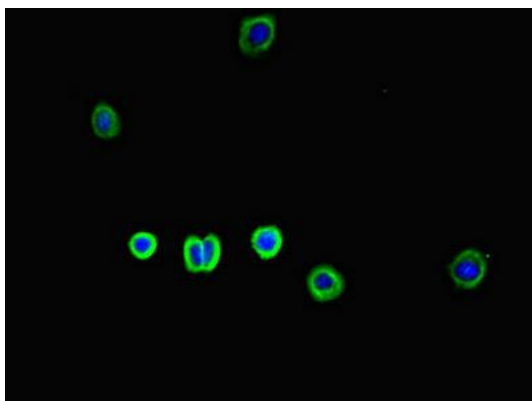
Storage:

Preservative: 0.03% Proclin 300. Constituents: 50% Glycerol, 0.01M PBS, PH 7.4

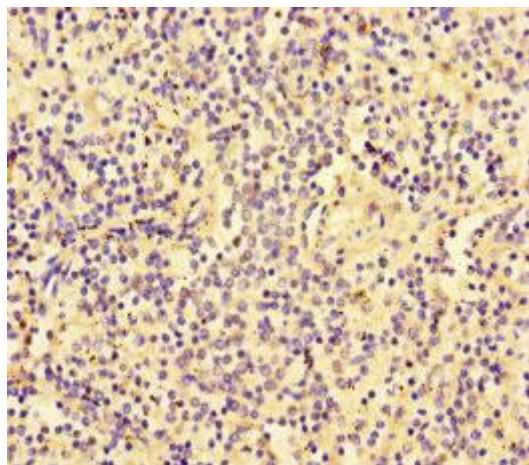
Product Images



Western Blot. Positive WB detected in: Mouse brain tissue. All lanes: SLC30A10 antibody at 3 μ g/ml. Secondary. Goat polyclonal to rabbit IgG at 1/50000 dilution. Predicted band size: 53, 27, 25 kDa. Observed band size: 53 kDa.



Immunofluorescent analysis of HepG2 cells using PACO46666 at dilution of 1:100 and Alexa Fluor 488-conjugated AffiniPure Goat Anti-Rabbit IgG(H+L).



Immunohistochemistry of paraffin-embedded human spleen tissue using PACO46666 at dilution of 1:100.