

WDFY4 Antibody



PACO46670

Product Information

Size:

50ug

Reactivity:

Human

Source:

Rabbit

Isotype:

IgG

Applications:

ELISA, IHC

Recommended dilutions:

ELISA:1:2000-1:10000, IHC:1:20-1:200

Protein Background:

endomembrane system, extrinsic component of membrane, phospholipid binding.

Gene ID:

WDFY4

Uniprot

Q6ZS81

Synonyms:

WD repeat- and FYVE domain-containing protein 4, WDFY4, C10orf64 KIAA1607

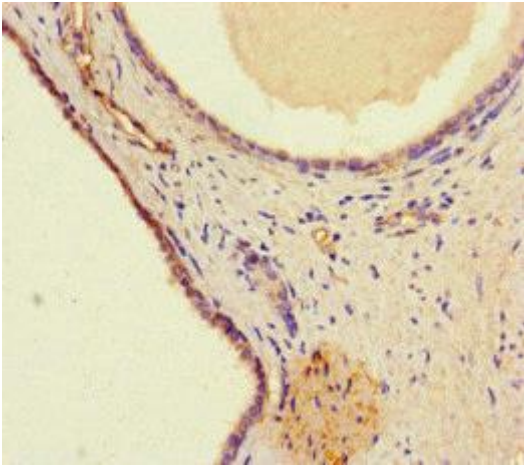
Immunogen:

Recombinant Human WD repeat- and FYVE domain-containing protein 4 protein (1-322AA).

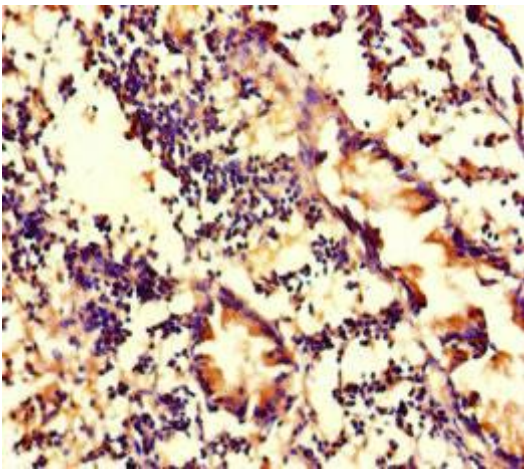
Storage:

Preservative: 0.03% Proclin 300. Constituents: 50% Glycerol, 0.01M PBS, PH 7.4

Product Images



Immunohistochemistry of paraffin-embedded human prostate cancer using PACO46670 at dilution of 1:100.



Immunohistochemistry of paraffin-embedded human appendix tissue using PACO46670 at dilution of 1:100.