

# SBF2 Antibody



PACO46722

---

## Product Information

**Size:**

50ug

**Reactivity:**

Human

**Source:**

Rabbit

**Isotype:**

IgG

**Applications:**

ELISA, IHC, IF

**Recommended dilutions:**

ELISA:1:2000-1:10000, IHC:1:20-1:200,  
IF:1:50-1:200

**Protein Background:**

Guanine nucleotide exchange factor (GEF) which may activate RAB28. Promotes the exchange of GDP to GTP, converting inactive GDP-bound Rab proteins into their active GTP-bound form.

**Gene ID:**

SBF2

**Uniprot**

Q86WG5

**Synonyms:**

Myotubularin-related protein 13 (SET-binding factor 2), SBF2, CMT4B2 KIAA1766  
MTMR13

**Immunogen:**

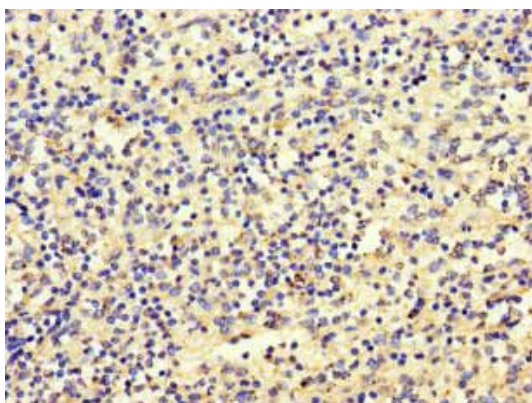
Recombinant Human Myotubularin-related protein 13 protein (1585-1813AA).

**Storage:**

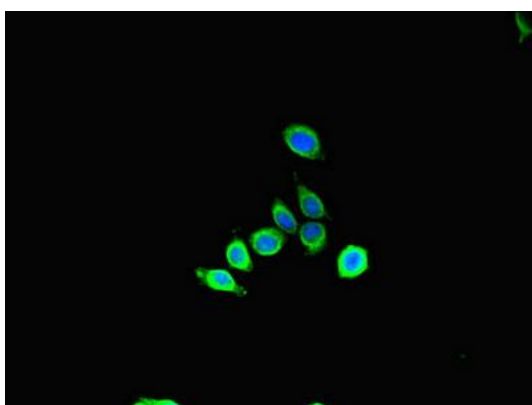
Preservative: 0.03% Proclin 300. Constituents: 50% Glycerol, 0.01M PBS, PH 7.4

## Product Images

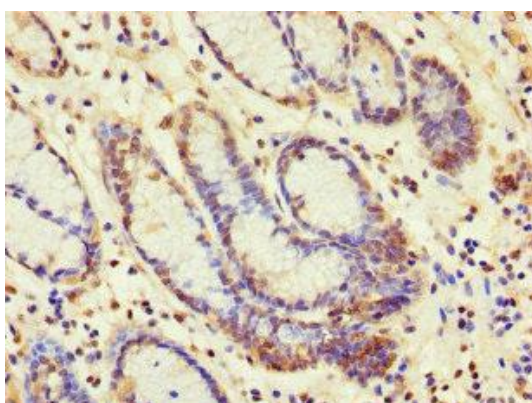
---



Immunohistochemistry of paraffin-embedded human spleen tissue using PACO46722 at dilution of 1:100.



Immunofluorescent analysis of HepG2 cells using PACO46722 at dilution of 1:100 and Alexa Fluor 488-conjugated AffiniPure Goat Anti-Rabbit IgG(H+L).



Immunohistochemistry of paraffin-embedded human gastric cancer using PACO46722 at dilution of 1:100.