

# MORC1 Antibody



PACO46750

---

## Product Information

**Size:**

50ug

**Reactivity:**

Human

**Source:**

Rabbit

**Isotype:**

IgG

**Applications:**

ELISA, IHC, IF

**Recommended dilutions:**

ELISA:1:2000-1:10000, IHC:1:20-1:200,  
IF:1:50-1:200

**Protein Background:**

Required for spermatogenesis.

**Gene ID:**

MORC1

**Uniprot**

Q86VD1

**Synonyms:**

MORC family CW-type zinc finger protein 1 (Cancer/testis antigen 33) (CT33), MORC1, MORC

**Immunogen:**

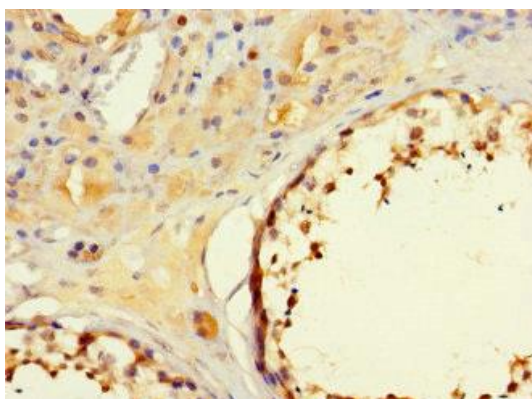
Recombinant Human MORC family CW-type zinc finger protein 1 protein (683-984AA).

**Storage:**

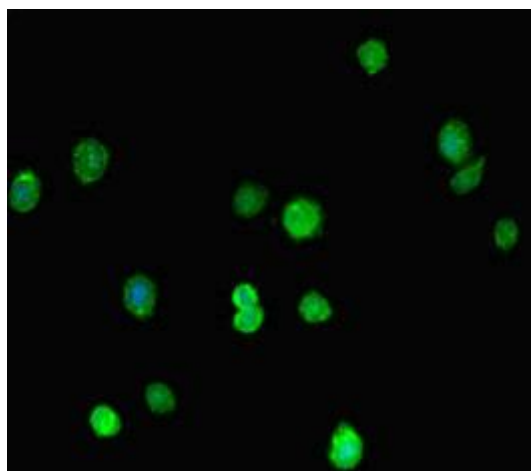
Preservative: 0.03% Proclin 300. Constituents: 50% Glycerol, 0.01M PBS, PH 7.4

## Product Images

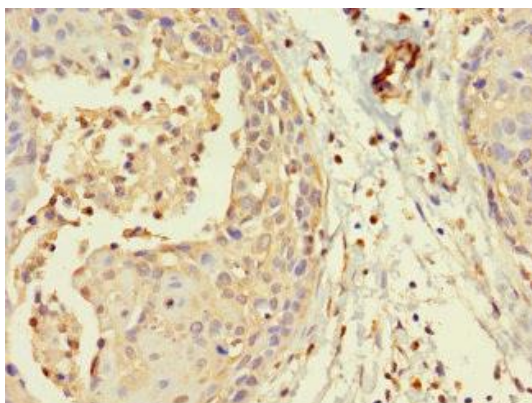
---



Immunohistochemistry of paraffin-embedded human testis tissue using PACO46750 at dilution of 1:100.



Immunofluorescent analysis of HepG2 cells using PACO46750 at dilution of 1:100 and Alexa Fluor 488-conjugated AffiniPure Goat Anti-Rabbit IgG(H+L).



Immunohistochemistry of paraffin-embedded human cervical cancer using PACO46750 at dilution of 1:100.