

PACO46782

Product Information

Size:

50ug

Reactivity:

Human

Source:

Rabbit

Isotype:

IgG

Applications:

ELISA, WB, IHC, IF

Recommended dilutions:

ELISA:1:2000-1:10000, WB:1:500-1:5000,
IHC:1:100-1:500, IF:1:50-1:500

Protein Background:

Exhibits arylsulfatase activity and highly specific endoglucosamine-6-sulfatase activity. It can remove sulfate from the C-6 position of glucosamine within specific subregions of intact heparin. Diminishes HSPG (heparan sulfate proteoglycans) sulfation, inhibits signaling by heparin-dependent growth factors, diminishes proliferation, and facilitates apoptosis in response to exogenous stimulation.

Gene ID:

SULF1

Uniprot

Q8IWU6

Synonyms:

Extracellular sulfatase Sulf-1 (hSulf-1) (EC 3.1.6), SULF1, KIAA1077

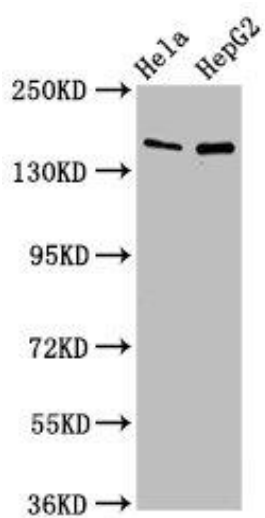
Immunogen:

Recombinant Human Extracellular sulfatase Sulf-1 protein (105-372AA).

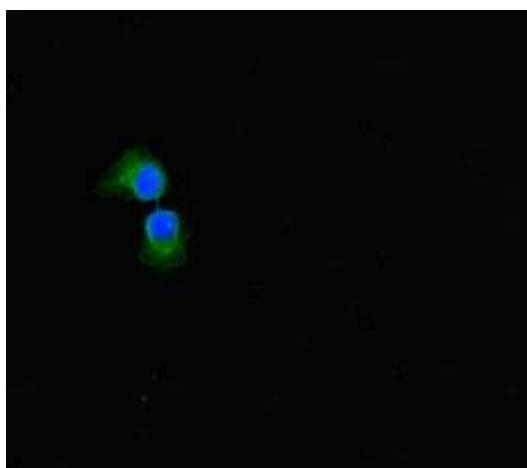
Storage:

Preservative: 0.03% Proclin 300. Constituents: 50% Glycerol, 0.01M PBS, PH 7.4

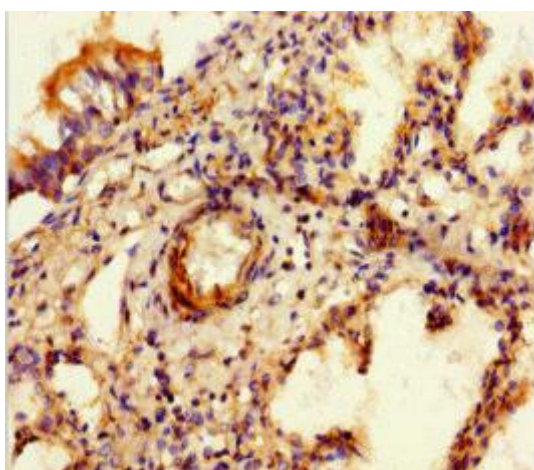
Product Images



Western Blot. Positive WB detected in: HeLa whole cell lysate, HepG2 whole cell lysate. All lanes: SULF1 antibody at 4 μ g/ml. Secondary: Goat polyclonal to rabbit IgG at 1/50000 dilution. Predicted band size: 102 kDa. Observed band size: 150 kDa.



Immunofluorescent analysis of A549 cells using PACO46782 at dilution of 1:100 and Alexa Fluor 488-conjugated AffiniPure Goat Anti-Rabbit IgG(H+L).



Immunohistochemistry of paraffin-embedded human lung tissue using PACO46782 at dilution of 1:100.