

Product Information

Size:

50ug

Reactivity:

Human

Source:

Rabbit

Isotype:

IgG

Applications:

ELISA, IHC, IF

Recommended dilutions:

ELISA:1:2000-1:10000, IHC:1:20-1:200,
IF:1:50-1:200

Protein Background:

DNA primase and DNA polymerase able to initiate de novo DNA synthesis using dNTPs. Shows a high capacity to tolerate DNA damage lesions such as 8oxoG and abasic sites in DNA. Involved in translesion synthesis via its primase activity by mediating uninterrupted fork progression after programmed or damage-induced fork arrest and by reinitiating DNA synthesis after dNTP depletion. Required for mitochondrial DNA (mtDNA) synthesis, suggesting it may be involved in DNA tolerance during the replication of mitochondrial DNA. Has non-overlapping function with POLH.

Gene ID:

PRIMPOL

Uniprot

Q96LW4

Synonyms:

DNA-directed primase/polymerase protein (hPrimpol1) (EC 2.7.7) (Coiled-coil domain-containing protein 111), PRIMPOL, CCDC111

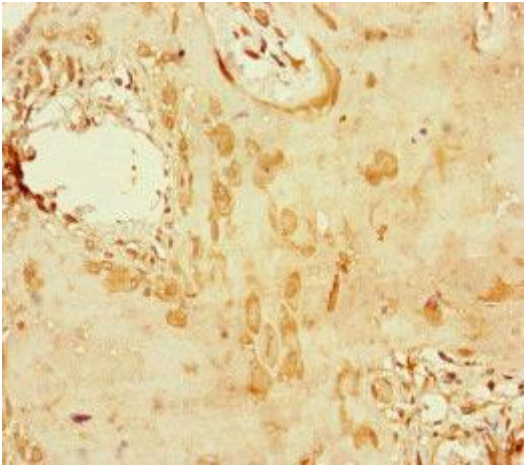
Immunogen:

Recombinant Human DNA-directed primase/polymerase protein (305-537AA).

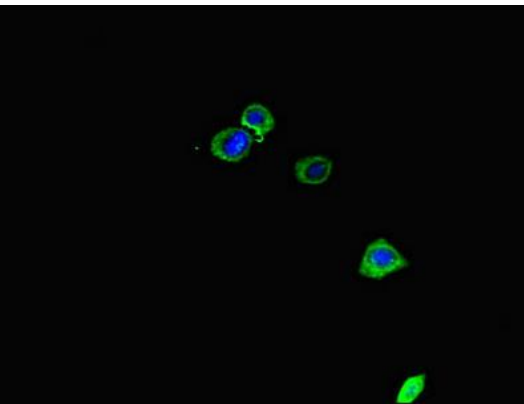
Storage:

Preservative: 0.03% Proclin 300. Constituents: 50% Glycerol, 0.01M PBS, PH 7.4

Product Images



Immunohistochemistry of paraffin-embedded human placenta tissue using PACO46834 at dilution of 1:100.



Immunofluorescent analysis of HepG2 cells using PACO46834 at dilution of 1:100 and Alexa Fluor 488-conjugated AffiniPure Goat Anti-Rabbit IgG(H+L).