

# LRR1 Antibody



PACO46866

---

## Product Information

**Size:**

50ug

**Reactivity:**

Human

**Source:**

Rabbit

**Isotype:**

IgG

**Applications:**

ELISA, IHC, IF

**Recommended dilutions:**

ELISA:1:2000-1:10000, IHC:1:20-1:200,  
IF:1:50-1:200

**Protein Background:**

May negatively regulate the 4-1BB-mediated signaling cascades which result in the activation of NK-kappaB and JNK1. Probable substrate recognition subunit of an ECS (Elongin BC-CUL2/5-SOCS-box protein) E3 ubiquitin-protein ligase complex which mediates the ubiquitination and subsequent proteasomal degradation of target proteins.

**Gene ID:**

LRR1

**Uniprot**

Q96L50

**Synonyms:**

Leucine-rich repeat protein 1 (4-1BB-mediated-signaling molecule) (4-1BB1rr) (LRR-repeat protein 1) (LRR-1) (Peptidylprolyl isomerase-like 5), LRR1, PPIL5

**Immunogen:**

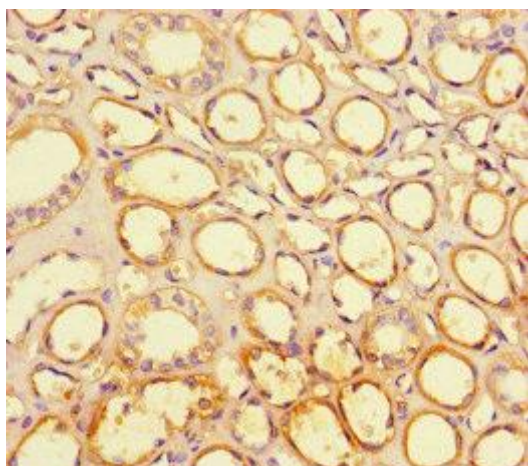
Recombinant Human Leucine-rich repeat protein 1 protein (18-159AA).

**Storage:**

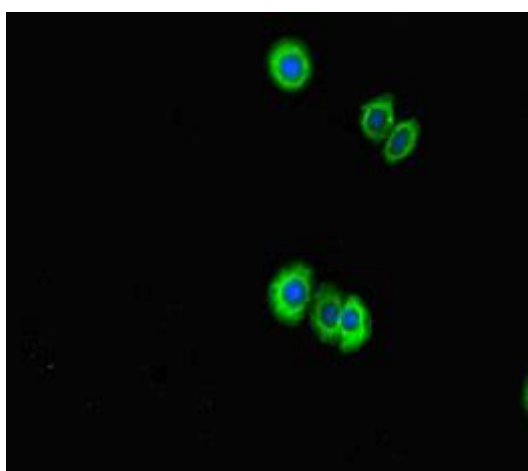
Preservative: 0.03% Proclin 300. Constituents: 50% Glycerol, 0.01M PBS, PH 7.4

## Product Images

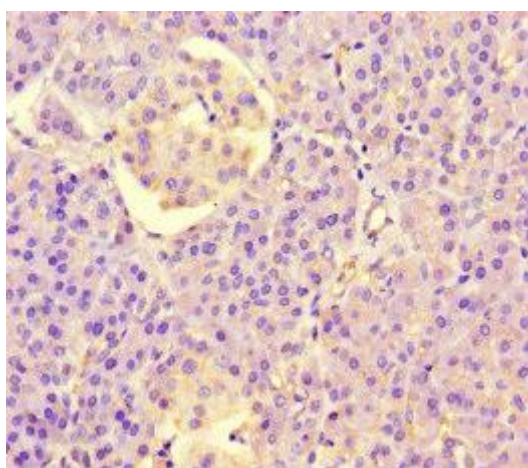
---



Immunohistochemistry of paraffin-embedded human kidney tissue using PACO46866 at dilution of 1:100.



Immunofluorescent analysis of HepG2 cells using PACO46866 at dilution of 1:100 and Alexa Fluor 488-conjugated AffiniPure Goat Anti-Rabbit IgG(H+L).



Immunohistochemistry of paraffin-embedded human pancreatic tissue using PACO46866 at dilution of 1:100.