

# PLD6 Antibody



PACO46870

---

## Product Information

**Size:**

50ug

**Reactivity:**

Human, Mouse

**Source:**

Rabbit

**Isotype:**

IgG

**Applications:**

ELISA, WB, IHC, IF

**Recommended dilutions:**

ELISA:1:2000-1:10000, WB:1:2000-1:5000,  
IHC:1:20-1:200, IF:1:50-1:200

**Protein Background:****Gene ID:**

PLD6

**Uniprot**

Q8N2A8

**Synonyms:**

Mitochondrial cardiolipin hydrolase (EC 3.1) (Choline phosphatase 6) (Mitochondrial phospholipase) (MitoPLD) (Phosphatidylcholine-hydrolyzing phospholipase D6) (Phospholipase D6) (PLD 6) (Protein zucchini homolog), PLD6

**Immunogen:**

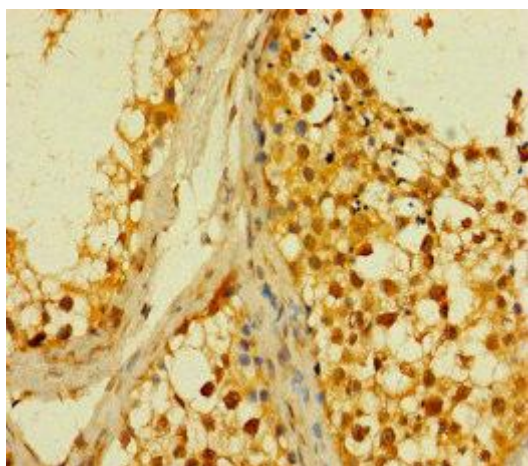
Recombinant Human Mitochondrial cardiolipin hydrolase protein (1-252AA).

**Storage:**

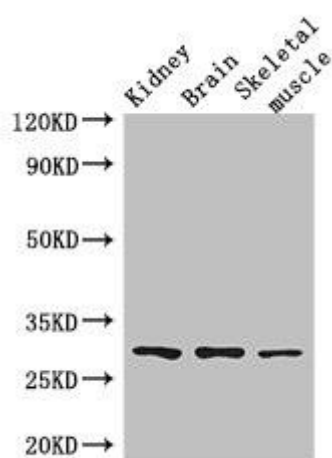
Preservative: 0.03% Proclin 300. Constituents: 50% Glycerol, 0.01M PBS, PH 7.4

## Product Images

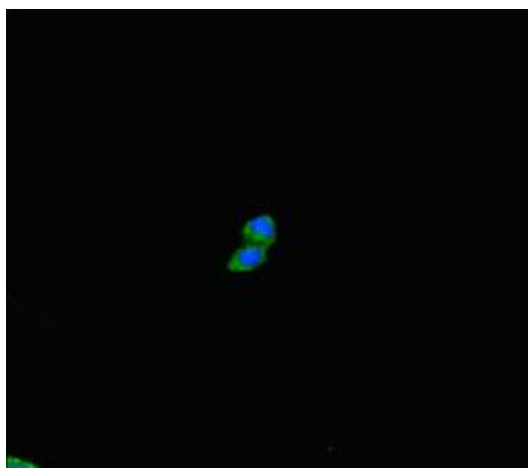
---



Immunohistochemistry of paraffin-embedded human testis tissue using PACO46870 at dilution of 1:100.



Western Blot. Positive WB detected in: Mouse kidney tissue, Mouse brain tissue, Mouse skeletal muscle tissue. All lanes: PLD6 antibody at 2.5µg/ml. Secondary. Goat polyclonal to rabbit IgG at 1/50000 dilution. Predicted band size: 29 kDa. Observed band size: 29 kDa.



Immunofluorescent analysis of HepG2 cells using PACO46870 at dilution of 1:100 and Alexa Fluor 488-conjugated AffiniPure Goat Anti-Rabbit IgG(H+L).