

SMARCE1 Antibody



PACO46890

Product Information

Size:

50ug

Reactivity:

Human

Source:

Rabbit

Isotype:

IgG

Applications:

ELISA, IHC

Recommended dilutions:

ELISA:1:2000-1:10000, IHC:1:20-1:200

Protein Background:

Gene ID:

SMARCE1

Uniprot

Q969G3

Synonyms:

SWI/SNF-related matrix-associated actin-dependent regulator of chromatin subfamily E member 1 (BRG1-associated factor 57) (BAF57), SMARCE1, BAF57

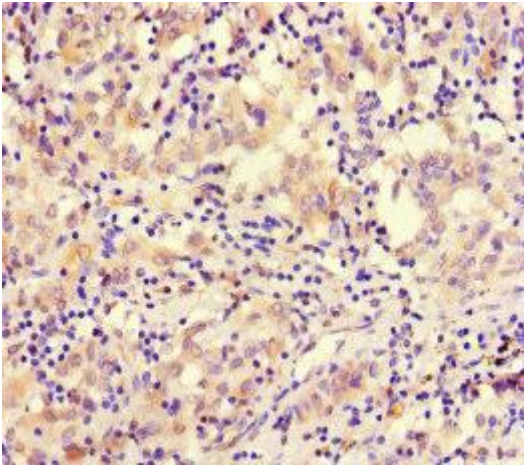
Immunogen:

Recombinant Human SWI/SNF-related matrix-associated actin-dependent regulator of chromatin subfamily E member 1 protein (20-243AA).

Storage:

Preservative: 0.03% Proclin 300. Constituents: 50% Glycerol, 0.01M PBS, PH 7.4

Product Images



Immunohistochemistry of paraffin-embedded human lung cancer using PACO46890 at dilution of 1:100.