

KCNK16 Antibody



PACO46958

Product Information

Size:

50ug

Reactivity:

Human

Source:

Rabbit

Isotype:

IgG

Applications:

ELISA, IHC

Recommended dilutions:

ELISA:1:2000-1:10000, IHC:1:20-1:200

Protein Background:

Outward rectifying potassium channel. Produces rapidly activating and non-inactivating outward rectifier K(+) currents.

Gene ID:

KCNK16

Uniprot

Q96T55

Synonyms:

Potassium channel subfamily K member 16 (2P domain potassium channel Talk-1) (TWIK-related alkaline pH-activated K(+) channel 1) (TALK-1), KCNK16, TALK1

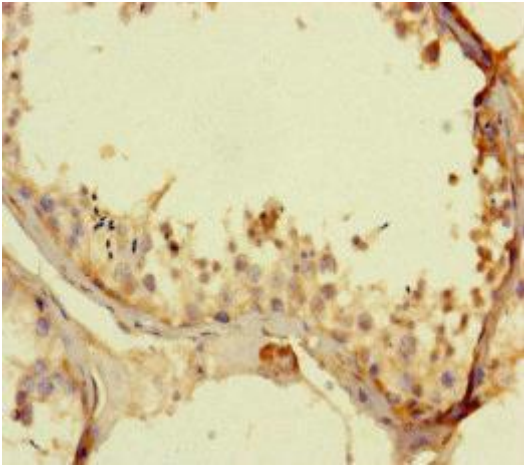
Immunogen:

Recombinant Human Potassium channel subfamily K member 16 protein (259-309AA).

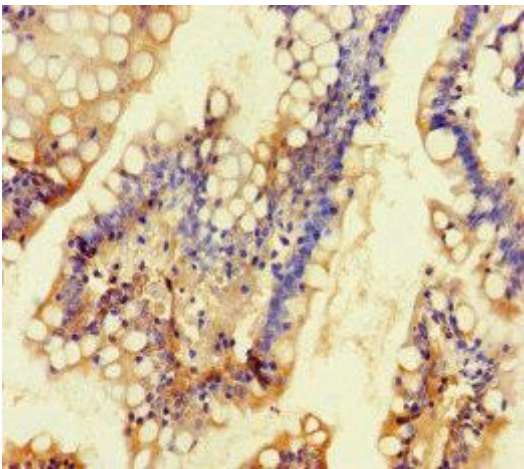
Storage:

Preservative: 0.03% Proclin 300. Constituents: 50% Glycerol, 0.01M PBS, PH 7.4

Product Images



Immunohistochemistry of paraffin-embedded human testis tissue using PACO46958 at dilution of 1:100.



Immunohistochemistry of paraffin-embedded human small intestine tissue using PACO46958 at dilution of 1:100.