

## Product Information

**Size:**

50ug

**Reactivity:**

Human

**Source:**

Rabbit

**Isotype:**

IgG

**Applications:**

ELISA, WB, IHC, IF

**Recommended dilutions:**

ELISA:1:2000-1:10000, WB:1:1000-1:5000,  
IHC:1:20-1:200, IF:1:50-1:200

**Protein Background:**

Antigen-presenting molecule specialized in presenting microbial vitamin B metabolites. Involved in the development and expansion of a small population of T-cells expressing an invariant T-cell receptor alpha chain called mucosal-associated invariant T-cells (MAIT). MAIT lymphocytes are preferentially located in the gut lamina propria and therefore may be involved in monitoring commensal flora or serve as a distress signal. Expression and MAIT cell recognition seem to be ligand-dependent.

**Gene ID:**

MR1

**Uniprot**

Q95460

**Synonyms:**

Major histocompatibility complex class I-related gene protein (MHC class I-related gene protein) (Class I histocompatibility antigen-like protein), MR1

**Immunogen:**

Recombinant Human Major histocompatibility complex class I-related gene protein (150-253AA).

**Storage:**

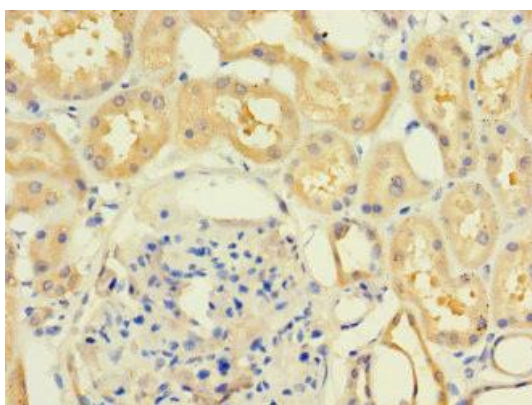
Preservative: 0.03% Proclin 300. Constituents: 50% Glycerol, 0.01M PBS, PH 7.4

## Product Images

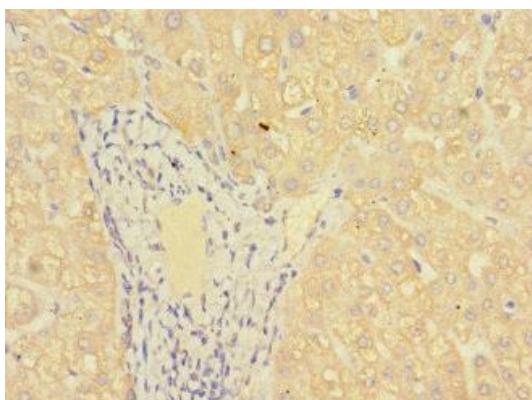
---



Western blot. All lanes: MR1 antibody at 6 $\mu$ g/ml + K562 whole cell lysate. Secondary. Goat polyclonal to rabbit IgG at 1/10000 dilution. Predicted band size: 40, 35, 29, 26 kDa. Observed band size: 40 kDa.



Immunohistochemistry of paraffin-embedded human kidney tissue using PACO46986 at dilution of 1:100.



Immunohistochemistry of paraffin-embedded human liver tissue using PACO46986 at dilution of 1:100.