

PLAC8 Antibody



PACO47086

Product Information

Size:

50ug

Reactivity:

Human

Source:

Rabbit

Isotype:

IgG

Applications:

ELISA, IHC, IF

Recommended dilutions:

ELISA:1:2000-1:10000, IHC:1:20-1:200,
IF:1:50-1:200

Protein Background:

Gene ID:

PLAC8

Uniprot

Q9NZF1

Synonyms:

Placenta-specific gene 8 protein (Protein C15), PLAC8

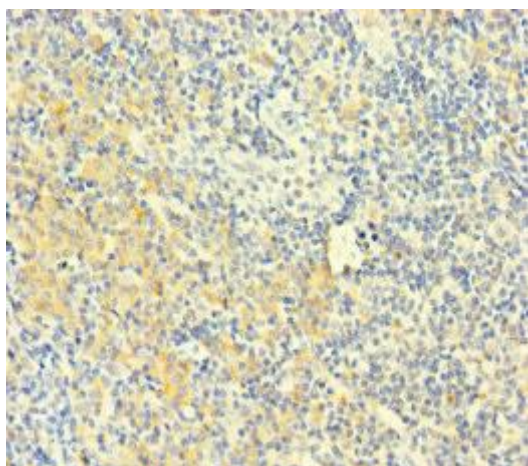
Immunogen:

Recombinant Human Placenta-specific gene 8 protein (1-110AA).

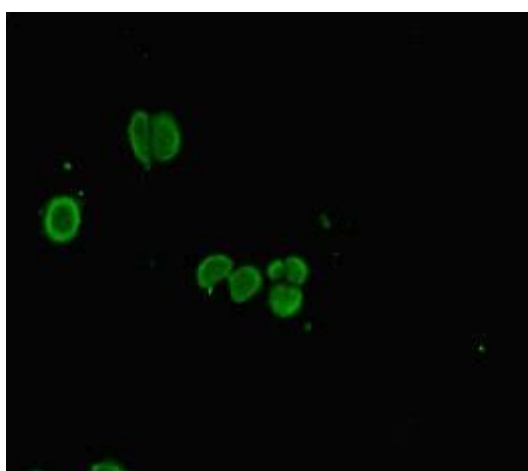
Storage:

Preservative: 0.03% Proclin 300. Constituents: 50% Glycerol, 0.01M PBS, PH 7.4

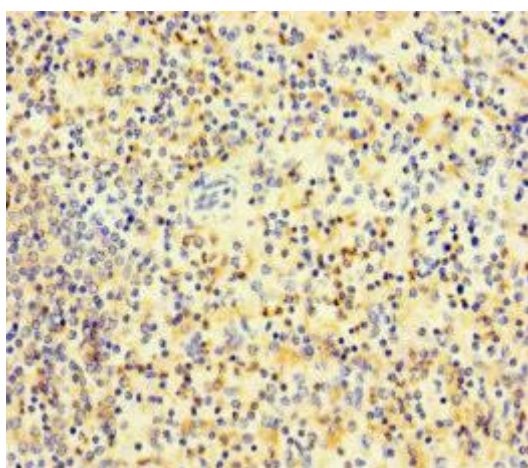
Product Images



Immunohistochemistry of paraffin-embedded human tonsil tissue using PACO47086 at dilution of 1:100.



Immunofluorescent analysis of HepG2 cells using PACO47086 at dilution of 1:100 and Alexa Fluor 488-conjugated AffiniPure Goat Anti-Rabbit IgG(H+L).



Immunohistochemistry of paraffin-embedded human spleen tissue using PACO47086 at dilution of 1:100.