

XKR8 Antibody



PACO47106

Product Information

Size:

50ug

Reactivity:

Human

Source:

Rabbit

Isotype:

IgG

Applications:

ELISA, WB, IHC, IF

Recommended dilutions:

ELISA:1:2000-1:10000, WB:1:500-1:5000,
IHC:1:1000-1:2000, IF:1:200-1:500

Protein Background:

Promotes phosphatidylserine exposure on apoptotic cell surface, possibly by mediating phospholipid scrambling. Phosphatidylserine is a specific marker only present at the surface of apoptotic cells and acts as a specific signal for engulfment. Has no effect on calcium-induced exposure of phosphatidylserine. Activated upon caspase cleavage, suggesting that it does not act prior the onset of apoptosis.

Gene ID:

XKR8

Uniprot

Q9H6D3

Synonyms:

XK-related protein 8 (hXkr8) [Cleaved into: XK-related protein 8, processed form], XKR8, XRG8

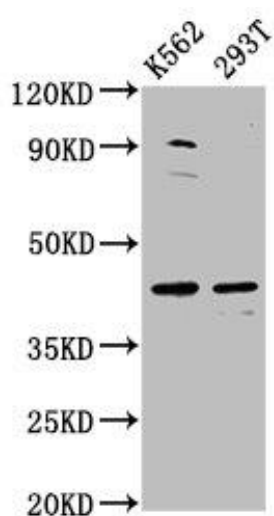
Immunogen:

Recombinant Human XK-related protein 8 protein (69-158AA).

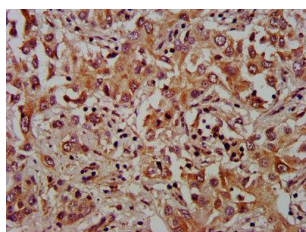
Storage:

Preservative: 0.03% Proclin 300. Constituents: 50% Glycerol, 0.01M PBS, PH 7.4

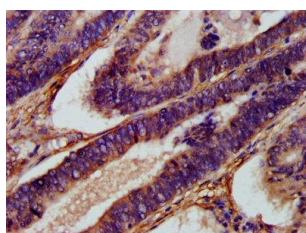
Product Images



Western Blot. Positive WB detected in: K562 whole cell lysate, 293T whole cell lysate. All lanes: XKR8 antibody at 3.4µg/ml. Secondary. Goat polyclonal to rabbit IgG at 1/50000 dilution. Predicted band size: 45 kDa. Observed band size: 45 kDa.



IHC image of PACO47106 diluted at 1:1000 and staining in paraffin-embedded human liver cancer performed on a Leica Bond™ system. After dewaxing and hydration, antigen retrieval was mediated by high pressure in a citrate buffer (pH 6.0). Section was blocked with 10% normal goat serum 30min at RT. Then primary antibody (1% BSA) was incubated at 4°C overnight. The primary is detected by a biotinylated secondary antibody and visualized using an HRP conjugated SP system.



IHC image of PACO47106 diluted at 1:1000 and staining in paraffin-embedded human colon cancer performed on a Leica Bond™ system. After dewaxing and hydration, antigen retrieval was mediated by high pressure in a citrate buffer (pH 6.0). Section was blocked with 10% normal goat serum 30min at RT. Then primary antibody (1% BSA) was incubated at 4°C overnight. The primary is detected by a biotinylated secondary antibody and visualized using an HRP conjugated SP system.