

Product Information

Size:

50ug

Reactivity:

Human

Source:

Rabbit

Isotype:

IgG

Applications:

ELISA, IHC, IF

Recommended dilutions:

ELISA:1:2000-1:10000, IHC:1:20-1:200,
IF:1:50-1:200

Protein Background:

Required for pre-mRNA splicing and for exon-junction complex (EJC) assembly. Hinders EIF4A3 from non-specifically binding RNA and escorts it to the splicing machinery to promote EJC assembly on mature mRNAs. Through its role in EJC assembly, required for nonsense-mediated mRNA decay.

Gene ID:

CWC22

Uniprot

Q9HCG8

Synonyms:

Pre-mRNA-splicing factor CWC22 homolog (Nucampholin homolog) (fSAPb), CWC22, KIAA1604 NCM

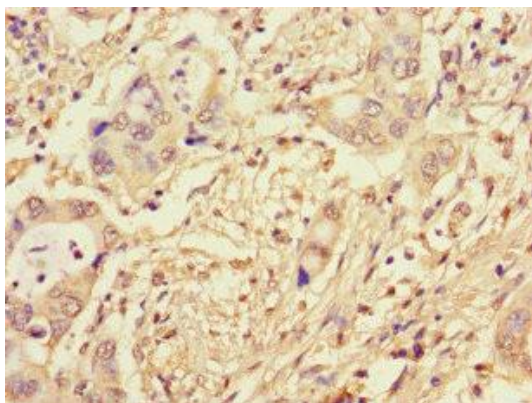
Immunogen:

Recombinant Human Pre-mRNA-splicing factor CWC22 homolog protein (360-623AA).

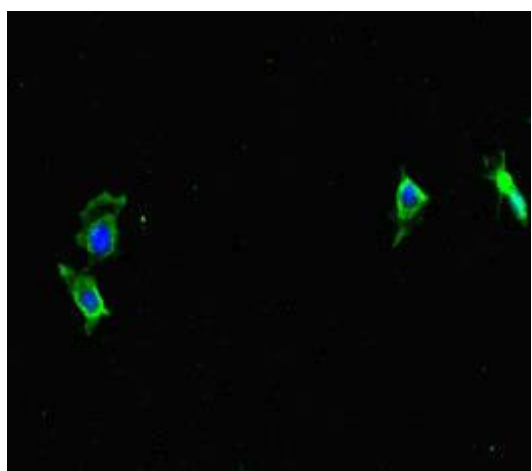
Storage:

Preservative: 0.03% Proclin 300. Constituents: 50% Glycerol, 0.01M PBS, PH 7.4

Product Images



Immunohistochemistry of paraffin-embedded human pancreatic cancer using PACO47110 at dilution of 1:100.



Immunofluorescent analysis of HeLa cells using PACO47110 at dilution of 1:100 and Alexa Fluor 488-conjugated AffiniPure Goat Anti-Rabbit IgG(H+L).