

PACO47122

---

## Product Information

**Size:**

50ug

**Reactivity:**

Human

**Source:**

Rabbit

**Isotype:**

IgG

**Applications:**

ELISA, IHC, IF

**Recommended dilutions:**

ELISA:1:2000-1:10000, IHC:1:20-1:200,  
IF:1:50-1:200

**Protein Background:**

Force generating protein of respiratory cilia. Produces force towards the minus ends of microtubules. Dynein has ATPase activity; the force-producing power stroke is thought to occur on release of ADP. Involved in sperm motility; implicated in sperm flagellar assembly.

**Gene ID:**

DNAH1

**Uniprot**

Q9P2D7

**Synonyms:**

Dynein heavy chain 1, axonemal (Axonemal beta dynein heavy chain 1) (Ciliary dynein heavy chain 1) (Heat shock regulated protein 1) (HSRF-1) (hDHC7), DNAH1, DHC7 DNAHC1 KIAA1410

**Immunogen:**

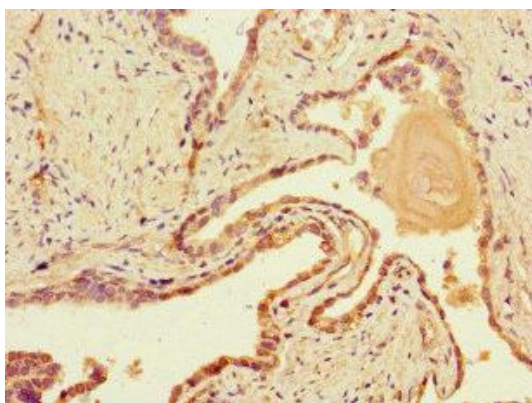
Recombinant Human Dynein heavy chain 1, axonemal protein (2225-2407AA).

**Storage:**

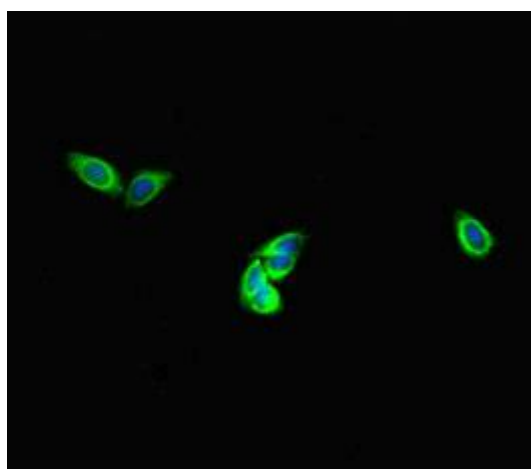
Preservative: 0.03% Proclin 300. Constituents: 50% Glycerol, 0.01M PBS, PH 7.4

## Product Images

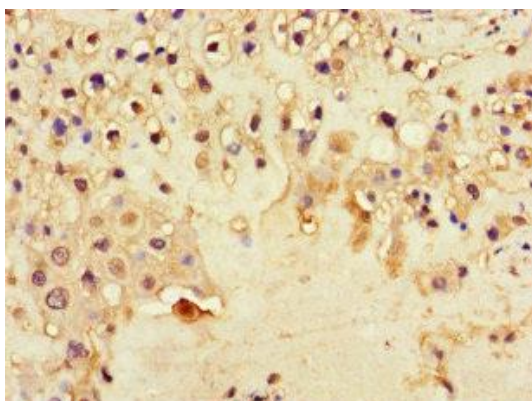
---



Immunohistochemistry of paraffin-embedded human prostate cancer using PACO47122 at dilution of 1:100.



Immunofluorescent analysis of HepG2 cells using PACO47122 at dilution of 1:100 and Alexa Fluor 488-conjugated AffiniPure Goat Anti-Rabbit IgG(H+L).



Immunohistochemistry of paraffin-embedded human placenta tissue using PACO47122 at dilution of 1:100.