

# CORO1B Antibody



PACO47126

---

## Product Information

**Size:**

50ug

**Reactivity:**

Human

**Source:**

Rabbit

**Isotype:**

IgG

**Applications:**

ELISA, IHC, IF

**Recommended dilutions:**

ELISA:1:2000-1:10000, IHC:1:20-1:200,  
IF:1:50-1:200

**Protein Background:**

Regulates leading edge dynamics and cell motility in fibroblasts. May be involved in cytokinesis and signal transduction.

**Gene ID:**

CORO1B

**Uniprot**

Q9BR76

**Synonyms:**

Coronin-1B (Coronin-2), CORO1B

**Immunogen:**

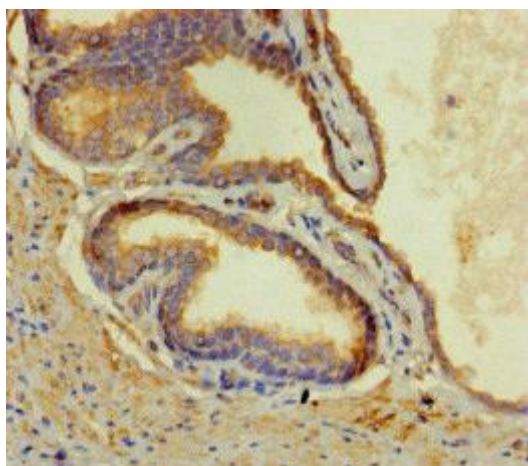
Recombinant Human Coronin-1B protein (252-453AA).

**Storage:**

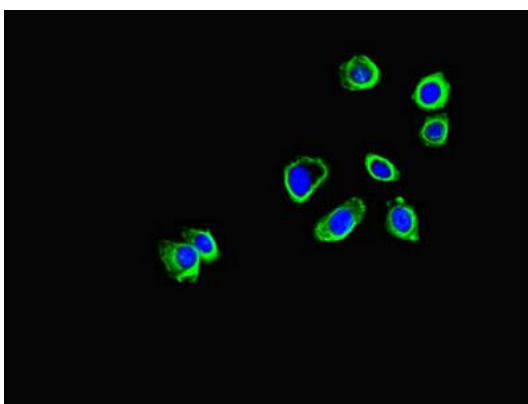
Preservative: 0.03% Proclin 300. Constituents: 50% Glycerol, 0.01M PBS, PH 7.4

## Product Images

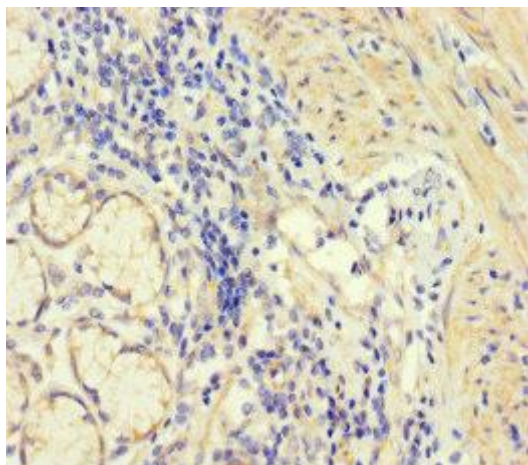
---



Immunohistochemistry of paraffin-embedded human prostate cancer using PACO47126 at dilution of 1:100.



Immunofluorescent analysis of HepG2 cells using PACO47126 at dilution of 1:100 and Alexa Fluor 488-conjugated AffiniPure Goat Anti-Rabbit IgG(H+L).



Immunohistochemistry of paraffin-embedded human gastric cancer using PACO47126 at dilution of 1:100.