

Product Information

Size:

50ug

Reactivity:

Human, Mouse

Source:

Rabbit

Isotype:

IgG

Applications:

ELISA, WB, IF

Recommended dilutions:

ELISA:1:2000-1:10000, WB:1:2000-1:5000,
IF:1:50-1:200

Protein Background:

Core component of the 3M complex, a complex required to regulate microtubule dynamics and genome integrity. It is unclear how the 3M complex regulates microtubules, it could act by controlling the level of a microtubule stabilizer. Required for localization of CUL7 to the centrosome.

Gene ID:

CCDC8

Uniprot

Q9H0W5

Synonyms:

Coiled-coil domain-containing protein 8, CCDC8

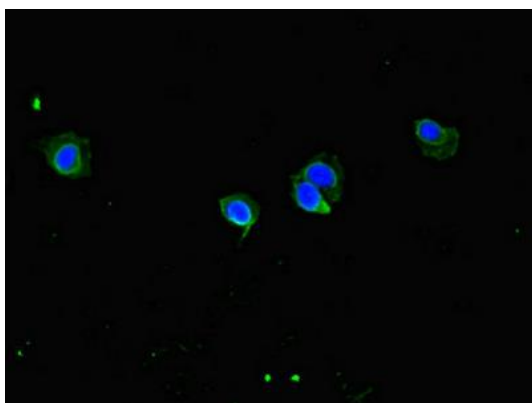
Immunogen:

Recombinant Human Coiled-coil domain-containing protein 8 protein (214-513AA).

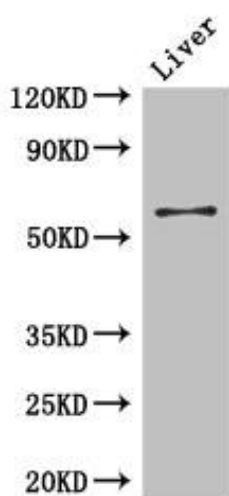
Storage:

Preservative: 0.03% Proclin 300. Constituents: 50% Glycerol, 0.01M PBS, PH 7.4

Product Images



Immunofluorescent analysis of HeLa cells using PACO47138 at dilution of 1:100 and Alexa Fluor 488-conjugated AffiniPure Goat Anti-Rabbit IgG(H+L).



Western Blot. Positive WB detected in: Mouse liver tissue. All lanes: CCDC8 antibody at 3µg/ml. Secondary. Goat polyclonal to rabbit IgG at 1/50000 dilution. Predicted band size: 60 kDa. Observed band size: 60 kDa.