

PACO47146

---

## Product Information

**Size:**

50ug

**Reactivity:**

Human

**Source:**

Rabbit

**Isotype:**

IgG

**Applications:**

ELISA, IHC

**Recommended dilutions:**

ELISA:1:2000-1:10000, IHC:1:20-1:200

**Protein Background:**

Non-lysosomal glucosylceramidase that catalyzes the conversion of glucosylceramide (GlcCer) to free glucose and ceramide. Involved in sphingomyelin generation and prevention of glycolipid accumulation. May also catalyze the hydrolysis of bile acid, 3-O-glucosides, however, the relevance of such activity is unclear in vivo. Plays a role in central nervous system development. Required for proper formation of motor neuron axons.

**Gene ID:**

GBA2

**Uniprot**

Q9HCG7

**Synonyms:**

Non-lysosomal glucosylceramidase (NLGase) (EC 3.2.1.45) (Beta-glucocerebrosidase 2) (Beta-glucosidase 2) (Glucosylceramidase 2), GBA2, KIAA1605

**Immunogen:**

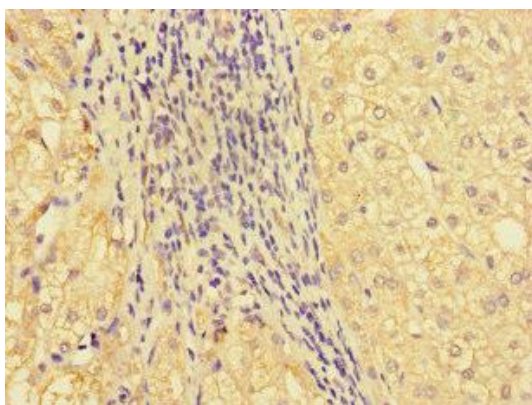
Recombinant Human Non-lysosomal glucosylceramidase protein (656-867AA).

**Storage:**

Preservative: 0.03% Proclin 300. Constituents: 50% Glycerol, 0.01M PBS, PH 7.4

## Product Images

---



Immunohistochemistry of paraffin-embedded human liver cancer using PACO47146 at dilution of 1:100.