

SLC25A10 Antibody



PACO47162

Product Information

Size:

50ug

Reactivity:

Human, Mouse

Source:

Rabbit

Isotype:

IgG

Applications:

ELISA, WB, IHC

Recommended dilutions:

ELISA:1:2000-1:10000, WB:1:1000-1:5000,
IHC:1:20-1:200

Protein Background:

Involved in translocation of malonate, malate and succinate in exchange for phosphate, sulfate, sulfite or thiosulfate across mitochondrial inner membrane.

Gene ID:

SLC25A10

Uniprot

Q9UBX3

Synonyms:

Mitochondrial dicarboxylate carrier (Solute carrier family 25 member 10), SLC25A10, DIC

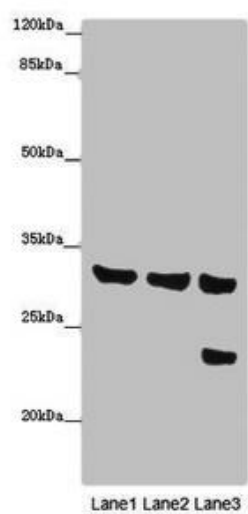
Immunogen:

Recombinant Human Mitochondrial dicarboxylate carrier protein (124-162AA).

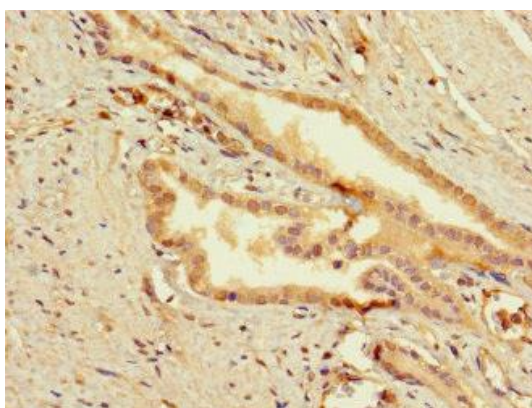
Storage:

Preservative: 0.03% Proclin 300. Constituents: 50% Glycerol, 0.01M PBS, PH 7.4

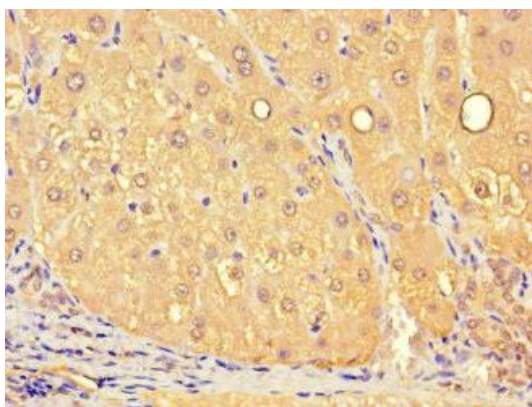
Product Images



Western blot. All lanes: SLC25A10 antibody at 16 μ g/ml. Lane 1: Mouse liver tissue. Lane 2: Mouse kidney tissue. Lane 3: HepG2 whole cell lysate. Secondary. Goat polyclonal to rabbit IgG at 1/10000 dilution. Predicted band size: 32, 33 kDa. Observed band size: 32, 24 kDa.



Immunohistochemistry of paraffin-embedded human prostate cancer using PACO47162 at dilution of 1:100.



Immunohistochemistry of paraffin-embedded human liver tissue using PACO47162 at dilution of 1:100.