

Product Information

Size:

50ug

Reactivity:

Human

Source:

Rabbit

Isotype:

IgG

Applications:

ELISA, IHC, IF

Recommended dilutions:

ELISA:1:2000-1:10000, IHC:1:20-1:200,
IF:1:50-1:200

Protein Background:

Protein-lysine N-methyltransferase that methylates both histones and non-histone proteins, including p53/TP53 and RB1. Specifically methylates histone H3 'Lys-4' (H3K4me) and dimethylates histone H3 'Lys-36' (H3K36me2). Shows even higher methyltransferase activity on p53/TP53. Monomethylates 'Lys-370' of p53/TP53, leading to decreased DNA-binding activity and subsequent transcriptional regulation activity of p53/TP53. Monomethylates RB1 at 'Lys-860'.

Gene ID:

SMYD2

Uniprot

Q9NRG4

Synonyms:

N-lysine methyltransferase SMYD2 (EC 2.1.1) (HSKM-B) (Histone methyltransferase SMYD2) (EC 2.1.1.43) (Lysine N-methyltransferase 3C) (SET and MYND domain-containing protein 2), SMYD2, KMT3C

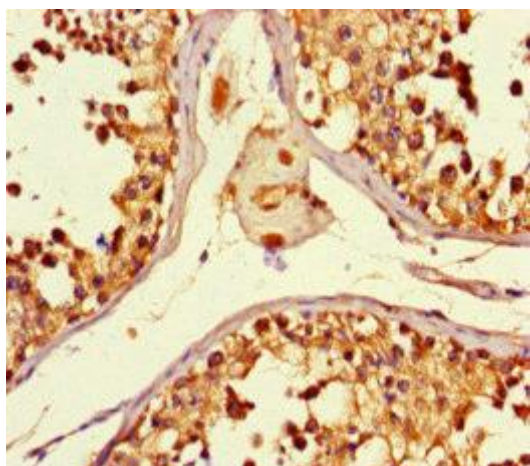
Immunogen:

Recombinant Human N-lysine methyltransferase SMYD2 protein (115-272AA).

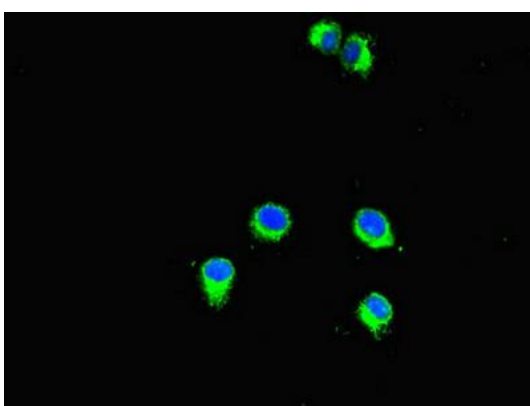
Storage:

Preservative: 0.03% Proclin 300. Constituents: 50% Glycerol, 0.01M PBS, PH 7.4

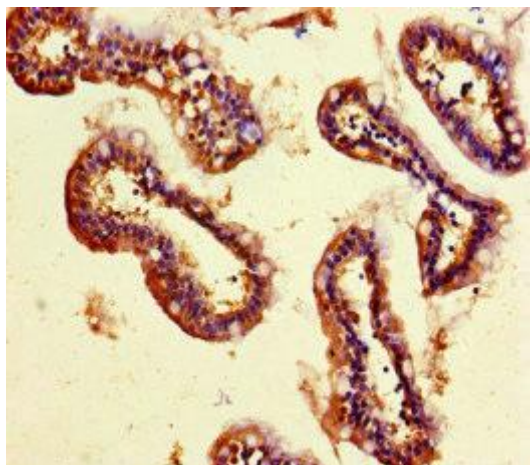
Product Images



Immunohistochemistry of paraffin-embedded human testis tissue using PACO47198 at dilution of 1:100.



Immunofluorescent analysis of HeLa cells using PACO47198 at dilution of 1:100 and Alexa Fluor 488-conjugated AffiniPure Goat Anti-Rabbit IgG(H+L).



Immunohistochemistry of paraffin-embedded human small intestine tissue using PACO47198 at dilution of 1:100.