

Product Information

Size:

50ug

Reactivity:

Human, Mouse

Source:

Rabbit

Isotype:

IgG

Applications:

ELISA, WB, IHC, IF

Recommended dilutions:

ELISA:1:2000-1:10000, WB:1:1000-1:5000,
IHC:1:20-1:200, IF:1:50-1:200

Protein Background:

Substrate-recognition component of the SCF(FBXL21) E3 ubiquitin ligase complex involved in circadian rhythm function. Plays a key role in the maintenance of both the speed and the robustness of the circadian clock oscillation. The SCF(FBXL21) complex mainly acts in the cytosol and mediates ubiquitination of CRY proteins (CRY1 and CRY2), leading to CRY proteins stabilization. The SCF(FBXL21) complex counteracts the activity of the SCF(FBXL3) complex and protects CRY proteins from degradation. Involved in the hypothalamic suprachiasmatic nucleus (SCN) clock regulating temporal organization of the daily activities.

Gene ID:

FBXL21

Uniprot

Q9UKT6

Synonyms:

F-box/LRR-repeat protein 21 (F-box and leucine-rich repeat protein 21) (F-box and leucine-rich repeat protein 3B) (F-box/LRR-repeat protein 3B), FBXL21, FBL21 FBL3 FBXL3B FBXL3P

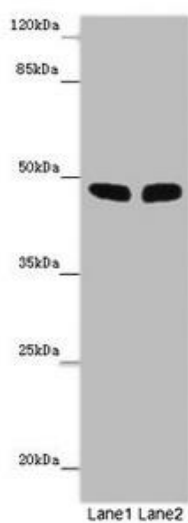
Immunogen:

Recombinant Human F-box/LRR-repeat protein 21 protein (78-137AA).

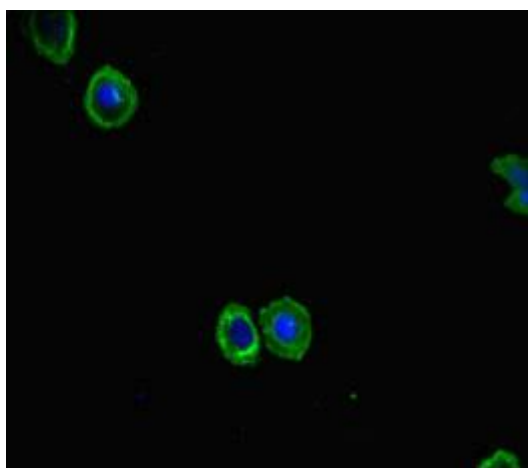
Storage:

Preservative: 0.03% Proclin 300. Constituents: 50% Glycerol, 0.01M PBS, PH 7.4

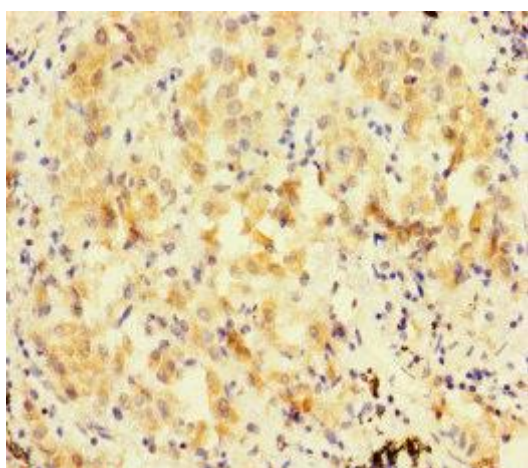
Product Images



Western blot. All lanes: FBL21 antibody at 10 $\mu\text{g/ml}$. Lane 1: Mouse heart tissue. Lane 2: Mouse skeletal muscle tissue. Secondary: Goat polyclonal to rabbit IgG at 1/10000 dilution. Predicted band size: 49 kDa. Observed band size: 49 kDa.



Immunofluorescent analysis of HepG2 cells using PACO47230 at dilution of 1:100 and Alexa Fluor 488-conjugated AffiniPure Goat Anti-Rabbit IgG(H+L).



Immunohistochemistry of paraffin-embedded human lung cancer using PACO47230 at dilution of 1:100.