

PACO47234

---

## Product Information

**Size:**

50ug

**Reactivity:**

Human, Mouse

**Source:**

Rabbit

**Isotype:**

IgG

**Applications:**

ELISA, WB, IHC, IF

**Recommended dilutions:**

ELISA:1:2000-1:10000, WB:1:2000-1:10000,  
IHC:1:20-1:200, IF:1:50-1:200

**Protein Background:**

Dephosphorylates CDKN1B at 'Thr-187', thus removing a signal for proteasomal degradation.

**Gene ID:**

PPM1H

**Uniprot**

Q9ULR3

**Synonyms:**

Protein phosphatase 1H (EC 3.1.3.16), PPM1H, ARHCL1 KIAA1157 URCC2

**Immunogen:**

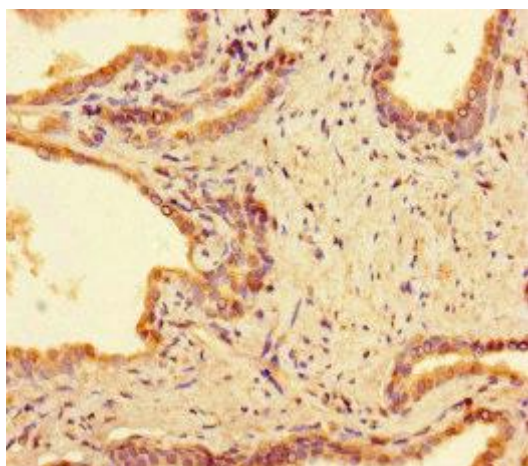
Recombinant Human Protein phosphatase 1H protein (73-289AA).

**Storage:**

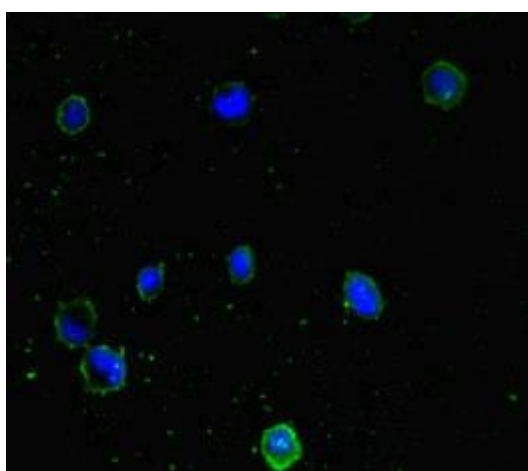
Preservative: 0.03% Proclin 300. Constituents: 50% Glycerol, 0.01M PBS, PH 7.4

## Product Images

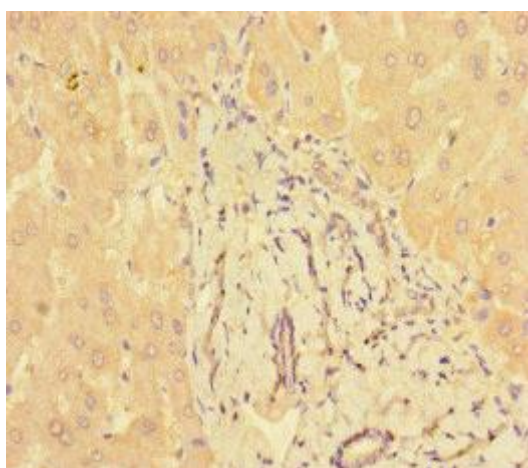
---



Immunohistochemistry of paraffin-embedded human prostate cancer using PACO47234 at dilution of 1:100.



Immunofluorescent analysis of MCF-7 cells using PACO47234 at dilution of 1:100 and Alexa Fluor 488-conjugated AffiniPure Goat Anti-Rabbit IgG(H+L).



Immunohistochemistry of paraffin-embedded human liver tissue using PACO47234 at dilution of 1:100.