

Product Information

Size:

50ug

Reactivity:

Human, Mouse

Source:

Rabbit

Isotype:

IgG

Applications:

ELISA, WB, IHC

Recommended dilutions:

ELISA:1:2000-1:10000, WB:1:500-1:2000,
IHC:1:20-1:200

Protein Background:

Component of the little elongation complex (LEC), a complex required to regulate small nuclear RNA (snRNA) gene transcription by RNA polymerase II and III. Specifically acts as a scaffold protein that promotes the LEC complex formation and recruitment and RNA polymerase II occupancy at snRNA genes in subnuclear bodies.

Gene ID:

ICE1

Uniprot

Q9Y2F5

Synonyms:

Little elongation complex subunit 1 (Interactor of little elongator complex ELL subunit 1), ICE1, KIAA0947

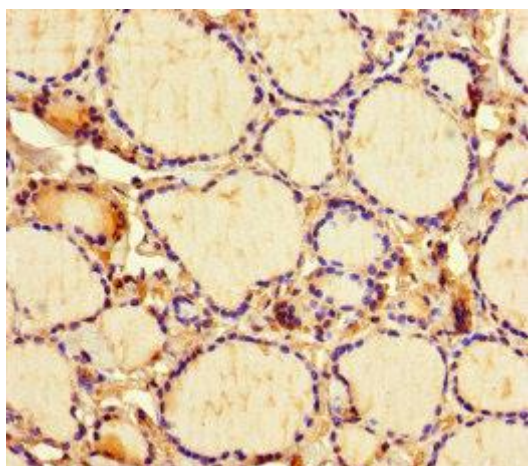
Immunogen:

Recombinant Human Little elongation complex subunit 1 protein (1213-1505AA).

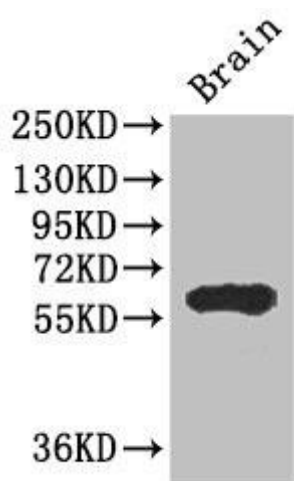
Storage:

Preservative: 0.03% Proclin 300. Constituents: 50% Glycerol, 0.01M PBS, PH 7.4

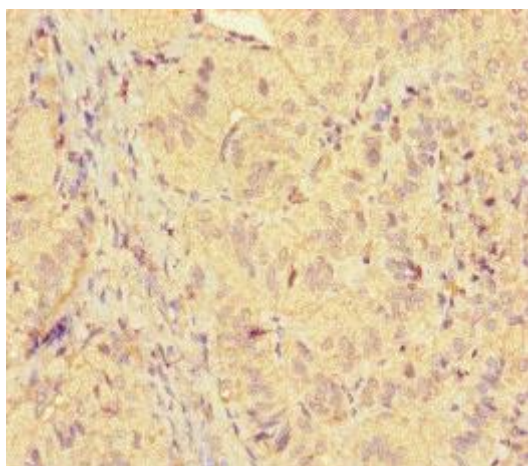
Product Images



Immunohistochemistry of paraffin-embedded human thyroid tissue using PACO47262 at dilution of 1:100.



Western Blot. Positive WB detected in: Mouse brain tissue. All lanes: ICE1 antibody at 2.7 μ g/ml. Secondary. Goat polyclonal to rabbit IgG at 1/50000 dilution. Predicted band size: 68 kDa. Observed band size: 68 kDa.



Immunohistochemistry of paraffin-embedded human adrenal gland tissue using PACO47262 at dilution of 1:100.