

MAST1 Antibody



PACO47270

Product Information

Size:

50ug

Reactivity:

Human

Source:

Rabbit

Isotype:

IgG

Applications:

ELISA, IHC, IF

Recommended dilutions:

ELISA:1:2000-1:10000, IHC:1:20-1:200,
IF:1:50-1:200

Protein Background:

Appears to link the dystrophin/utrophin network with microtubule filaments via the syntrophins. Phosphorylation of DMD or UTRN may modulate their affinities for associated proteins.

Gene ID:

MAST1

Uniprot

Q9Y2H9

Synonyms:

Microtubule-associated serine/threonine-protein kinase 1 (EC 2.7.11.1) (Syntrophin-associated serine/threonine-protein kinase), MAST1, KIAA0973 SAST

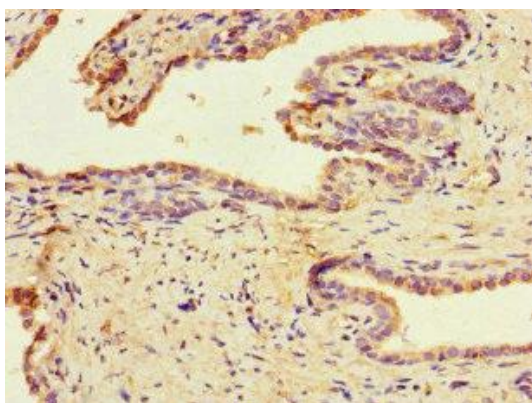
Immunogen:

Recombinant Human Microtubule-associated serine/threonine-protein kinase 1 protein (687-879AA).

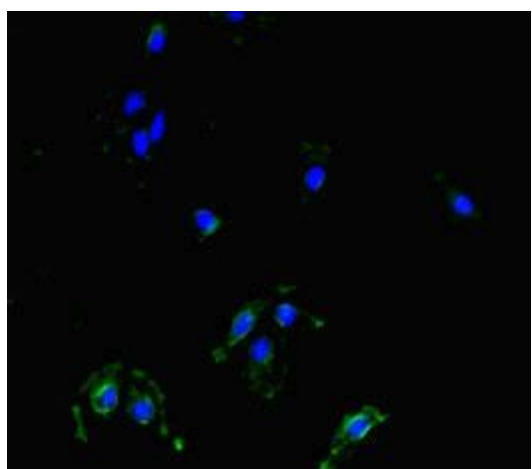
Storage:

Preservative: 0.03% Proclin 300. Constituents: 50% Glycerol, 0.01M PBS, PH 7.4

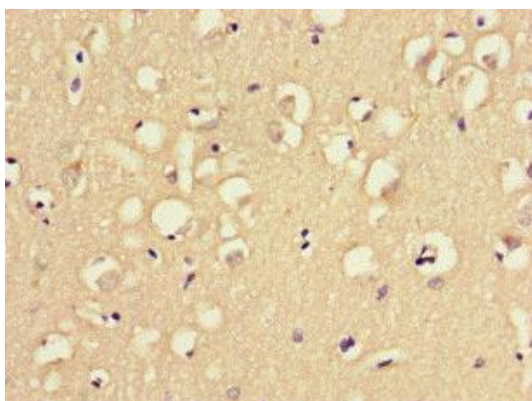
Product Images



Immunohistochemistry of paraffin-embedded human prostate cancer using PACO47270 at dilution of 1:100.



Immunofluorescent analysis of HeLa cells using PACO47270 at dilution of 1:100 and Alexa Fluor 488-conjugated AffiniPure Goat Anti-Rabbit IgG(H+L).



Immunohistochemistry of paraffin-embedded human brain tissue using PACO47270 at dilution of 1:100.