

ABLIM1 Antibody



PACO47274

Product Information

Size:

50ug

Reactivity:

Human, Mouse

Source:

Rabbit

Isotype:

IgG

Applications:

ELISA, WB, IHC, IF

Recommended dilutions:

ELISA:1:2000-1:10000, WB:1:1000-1:5000,
IHC:1:20-1:200, IF:1:50-1:200

Protein Background:

May act as scaffold protein. May play a role in the development of the retina. Has been suggested to play a role in axon guidance.

Gene ID:

ABLIM1

Uniprot

O14639

Synonyms:

Actin-binding LIM protein 1 (abLIM-1) (Actin-binding LIM protein family member 1) (Actin-binding double zinc finger protein) (LIMAB1) (Limatin), ABLIM1, ABLIM KIAA0059 LIMAB1

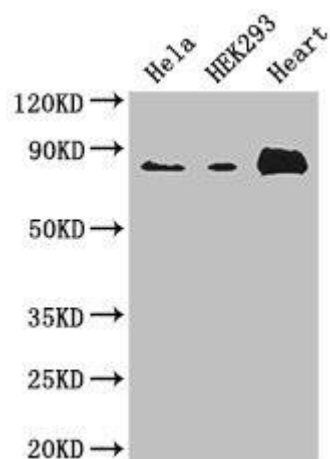
Immunogen:

Recombinant Human Actin-binding LIM protein 1 protein (174-319AA).

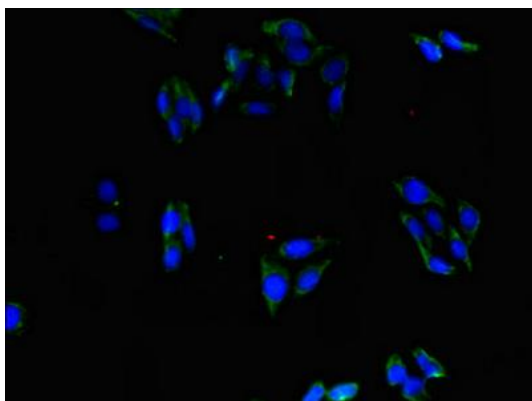
Storage:

Preservative: 0.03% Proclin 300. Constituents: 50% Glycerol, 0.01M PBS, PH 7.4

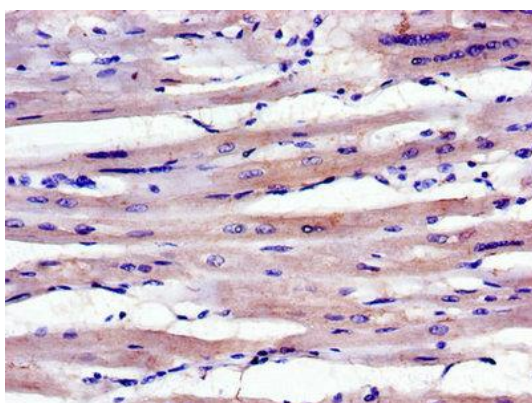
Product Images



Western Blot. Positive WB detected in: HeLa whole cell lysate, HEK293 whole cell lysate, Mouse heart tissue. All lanes: ABLIM1 antibody at 3.4 μ g/ml. Secondary. Goat polyclonal to rabbit IgG at 1/50000 dilution. Predicted band size: 88, 82, 49, 47, 53, 85 kDa. Observed band size: 88 kDa.



Immunofluorescent analysis of HepG2 cells using PACO47274 at dilution of 1:100 and Alexa Fluor 488-conjugated AffiniPure Goat Anti-Rabbit IgG(H+L).



Immunohistochemistry of paraffin-embedded human heart tissue using PACO47274 at dilution of 1:100.