

PACO47306

---

## Product Information

**Size:**

50ug

**Reactivity:**

Human, Mouse

**Source:**

Rabbit

**Isotype:**

IgG

**Applications:**

ELISA, WB, IHC

**Recommended dilutions:**

ELISA:1:2000-1:10000, WB:1:2000-1:5000,  
IHC:1:20-1:200

**Protein Background:**

E3 ubiquitin-protein ligase, which catalyzes ubiquitination of target proteins together with ubiquitin-conjugating enzyme E2 UBE2L3. Acts as an atypical E3 ubiquitin-protein ligase by working together with cullin-5-RING ubiquitin ligase complex (ECS complex, also named CRL5 complex) and initiating ubiquitination of ECS substrates: associates with ECS complex and specifically mediates addition of the first ubiquitin on ECS targets. The initial ubiquitin is then elongated. E3 ubiquitin-protein ligase activity is activated upon binding to neddylated form of the ECS complex. Mediates 'Lys-6', 'Lys-48'-and 'Lys-63'-linked polyubiquitination. May play a role in myelopoiesis.

**Gene ID:**

ARIH2

**Uniprot**

O95376

**Synonyms:**

E3 ubiquitin-protein ligase ARIH2 (ARI-2) (Protein ariadne-2 homolog) (EC 2.3.2.27) (RING-type E3 ubiquitin transferase ARIH2) (Triad1 protein), ARIH2, ARI2 TRIAD1

**Immunogen:**

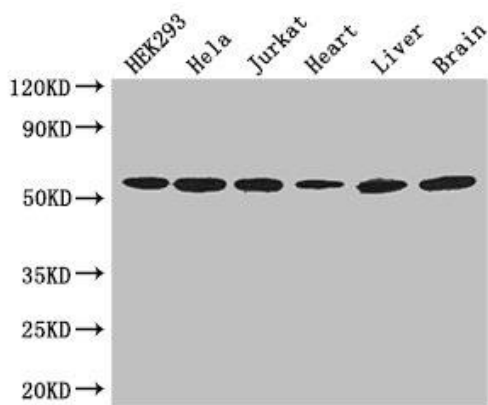
Recombinant Human E3 ubiquitin-protein ligase ARIH2 protein (43-360AA).

**Storage:**

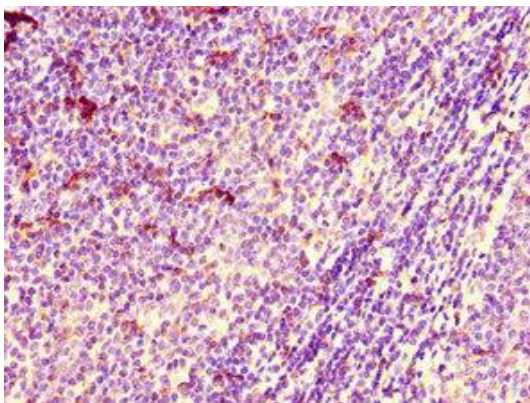
Preservative: 0.03% Proclin 300. Constituents: 50% Glycerol, 0.01M PBS, PH 7.4

## Product Images

---



Western Blot. Positive WB detected in: HEK293 whole cell lysate, HeLa whole cell lysate, Jurkat whole cell lysate, Mouse heart tissue, Mouse liver tissue, Mouse brain tissue. All lanes: ARIH2 antibody at 3 $\mu$ g/ml. Secondary. Goat polyclonal to rabbit IgG at 1/50000 dilution. Predicted band size: 58 kDa. Observed band size: 58 kDa.



Immunohistochemistry of paraffin-embedded human lymph node tissue using PACO47306 at dilution of 1:100.