

Product Information

Size:

50ug

Reactivity:

Human

Source:

Rabbit

Isotype:

IgG

Applications:

ELISA, IHC, IF

Recommended dilutions:

ELISA:1:2000-1:10000, IHC:1:20-1:200,
IF:1:50-1:200

Protein Background:

Recognizes and binds the 7-methylguanosine-containing mRNA cap during an early step in the initiation of protein synthesis and facilitates ribosome binding by inducing the unwinding of the mRNAs secondary structures. Component of the CYFIP1-EIF4E-FMR1 complex which binds to the mRNA cap and mediates translational repression. In the CYFIP1-EIF4E-FMR1 complex this subunit mediates the binding to the mRNA cap.

Gene ID:

EIF4E

Uniprot

P06730

Synonyms:

Eukaryotic translation initiation factor 4E (eIF-4E) (eIF4E) (eIF-4F 25 kDa subunit) (mRNA cap-binding protein), EIF4E, EIF4EL1 EIF4F

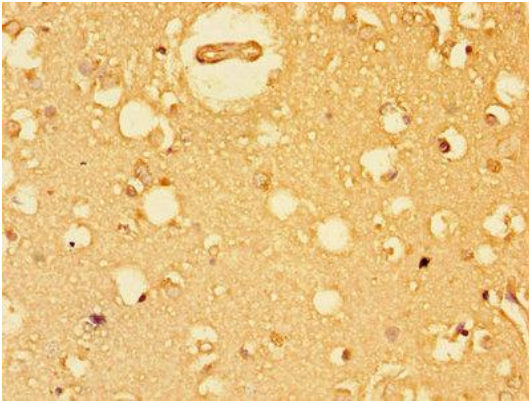
Immunogen:

Recombinant Human Eukaryotic translation initiation factor 4E protein (2-217AA).

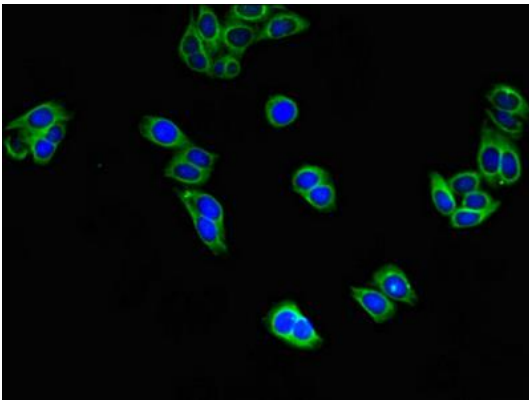
Storage:

Preservative: 0.03% Proclin 300. Constituents: 50% Glycerol, 0.01M PBS, PH 7.4

Product Images



Immunohistochemistry of paraffin-embedded human brain tissue using PACO47390 at dilution of 1:100.



Immunofluorescent analysis of HepG2 cells using PACO47390 at dilution of 1:100 and Alexa Fluor 488-conjugated AffiniPure Goat Anti-Rabbit IgG(H+L).