

Product Information

Size:

50ug

Reactivity:

Human, Mouse

Source:

Rabbit

Isotype:

IgG

Applications:

ELISA, WB, IHC, IF

Recommended dilutions:

ELISA:1:2000-1:10000, WB:1:1000-1:5000,
IHC:1:20-1:200, IF:1:50-1:200

Protein Background:

Kinase-defective receptor for members of the ephrin-B family. Binds to ephrin-B1 and ephrin-B2. Modulates cell adhesion and migration by exerting both positive and negative effects upon stimulation with ephrin-B2. Inhibits JNK activation, T-cell receptor-induced IL-2 secretion and CD25 expression upon stimulation with ephrin-B2.

Gene ID:

EPHB6

Uniprot

O15197

Synonyms:

Ephrin type-B receptor 6 (HEP) (Tyrosine-protein kinase-defective receptor EPH-6), EPHB6

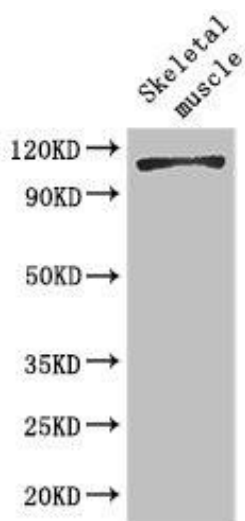
Immunogen:

Recombinant Human Ephrin type-B receptor 6 protein (410-553AA).

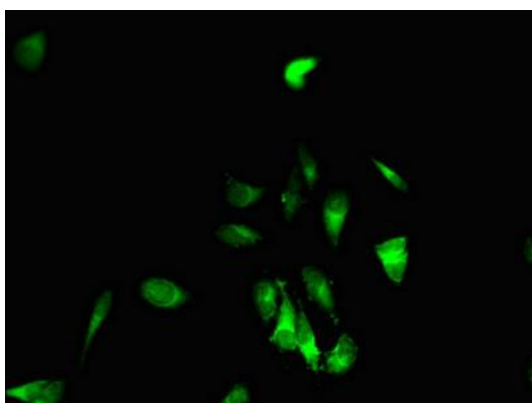
Storage:

Preservative: 0.03% Proclin 300. Constituents: 50% Glycerol, 0.01M PBS, PH 7.4

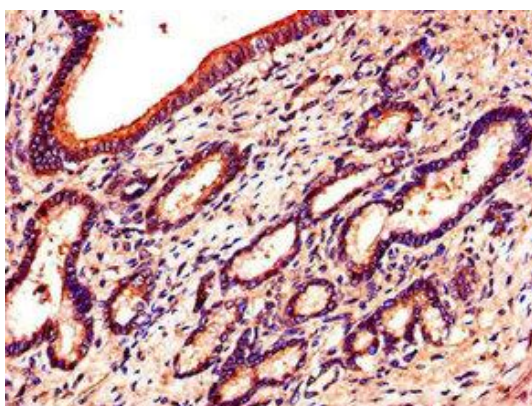
Product Images



Western Blot. Positive WB detected in: Mouse skeletal muscle tissue. All lanes: EPHB6 antibody at 2 μ g/ml. Secondary. Goat polyclonal to rabbit IgG at 1/50000 dilution. Predicted band size: 111, 82, 58 kDa. Observed band size: 111 kDa.



Immunofluorescent analysis of HeLa cells using PACO47402 at dilution of 1:100 and Alexa Fluor 488-conjugated AffiniPure Goat Anti-Rabbit IgG(H+L).



Immunohistochemistry of paraffin-embedded human pancreatic tissue using PACO47402 at dilution of 1:100.