

PACO47514

---

## Product Information

**Size:**

50ug

**Reactivity:**

Human

**Source:**

Rabbit

**Isotype:**

IgG

**Applications:**

ELISA, IHC, IF

**Recommended dilutions:**

ELISA:1:2000-1:10000, IHC:1:20-1:200,  
IF:1:50-1:200

**Protein Background:**

Hardly reversible, non-competitive, and potent inhibitor of CPA1, CPA2 and CPA4. May play a role in inflammation.

**Gene ID:**

LXN

**Uniprot**

Q9BS40

**Synonyms:**

Latexin (Endogenous carboxypeptidase inhibitor) (ECI) (Protein MUM) (Tissue carboxypeptidase inhibitor) (TCI), LXN

**Immunogen:**

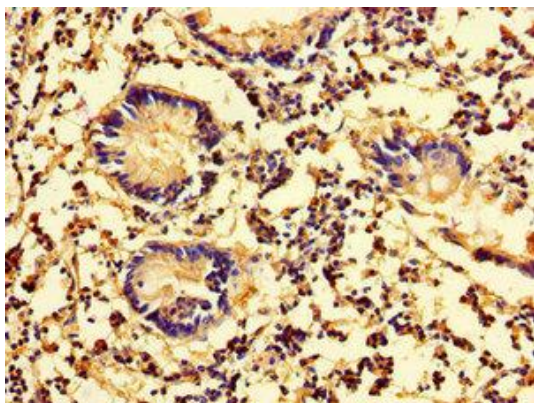
Recombinant Human Latexin protein (1-216AA).

**Storage:**

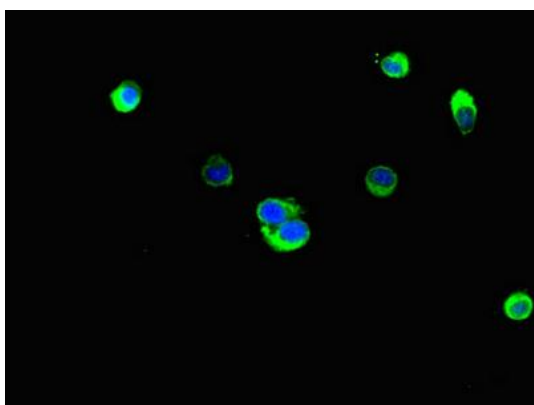
Preservative: 0.03% Proclin 300. Constituents: 50% Glycerol, 0.01M PBS, PH 7.4

## Product Images

---



Immunohistochemistry of paraffin-embedded human appendix tissue using PACO47514 at dilution of 1:100.



Immunofluorescent analysis of HeLa cells using PACO47514 at dilution of 1:100 and Alexa Fluor 488-conjugated AffiniPure Goat Anti-Rabbit IgG(H+L).