

MAP1LC3B2 Antibody



PACO47530

Product Information

Size:

50ug

Reactivity:

Human

Source:

Rabbit

Isotype:

IgG

Applications:

ELISA, IF

Recommended dilutions:

ELISA:1:2000-1:10000, IF:1:50-1:200

Protein Background:

Ubiquitin-like modifier involved in formation of autophagosomal vacuoles (autophagosomes). Plays a role in mitophagy which contributes to regulate mitochondrial quantity and quality by eliminating the mitochondria to a basal level to fulfill cellular energy requirements and preventing excess ROS production. Whereas LC3s are involved in elongation of the phagophore membrane, the GABARAP/GATE-16 subfamily is essential for a later stage in autophagosome maturation.

Gene ID:

MAP1LC3B2

Uniprot

A6NCE7

Synonyms:

Microtubule-associated proteins 1A/1B light chain 3 beta 2 (Microtubule-associated proteins 1A/1B light chain 3B-like), MAP1LC3B2

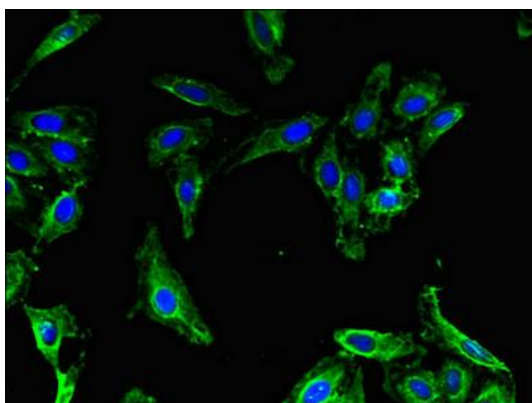
Immunogen:

Recombinant Human Microtubule-associated proteins 1A/1B light chain 3 & beta; 2 protein (1-47AA).

Storage:

Preservative: 0.03% Proclin 300. Constituents: 50% Glycerol, 0.01M PBS, PH 7.4

Product Images



Immunofluorescent analysis of HeLa cells using PACO47530 at dilution of 1:100 and Alexa Fluor 488-conjugated AffiniPure Goat Anti-Rabbit IgG(H+L).