

PACO47590

---

## Product Information

**Size:**

50ug

**Reactivity:**

Human, Mouse

**Source:**

Rabbit

**Isotype:**

IgG

**Applications:**

ELISA, WB, IHC, IF

**Recommended dilutions:**

ELISA:1:2000-1:10000, WB:1:1000-1:5000,  
IHC:1:20-1:200, IF:1:50-1:200

**Protein Background:**

Catalyzes the phosphorylation of D-fructose 6-phosphate to fructose 1,6-bisphosphate by ATP, the first committing step of glycolysis.

**Gene ID:**

PFKM

**Uniprot**

P08237

**Synonyms:**

ATP-dependent 6-phosphofructokinase, muscle type (ATP-PFK) (PFK-M) (EC 2.7.1.11) (6-phosphofructokinase type A) (Phosphofructo-1-kinase isozyme A) (PFK-A) (Phosphohexokinase), PFKM, PFKX

**Immunogen:**

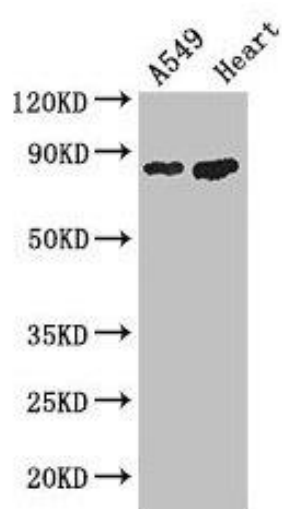
Recombinant Human ATP-dependent 6-phosphofructokinase, muscle type protein (166-334AA).

**Storage:**

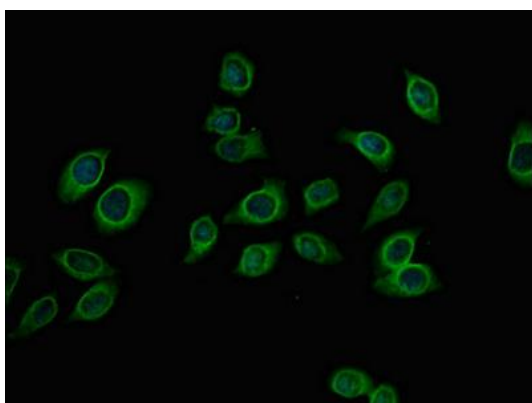
Preservative: 0.03% Proclin 300. Constituents: 50% Glycerol, 0.01M PBS, PH 7.4

## Product Images

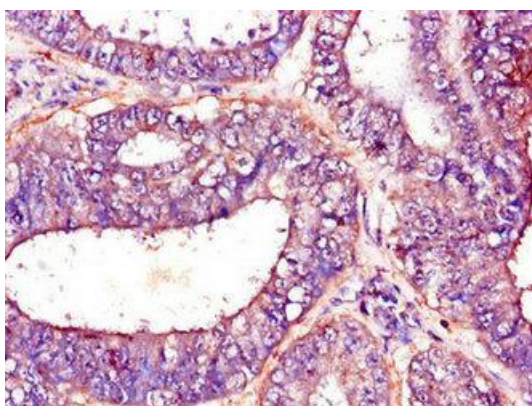
---



Western Blot. Positive WB detected in: A549 whole cell lysate, Mouse heart tissue. All lanes: PFKM antibody at 3.4 $\mu$ g/ml. Secondary. Goat polyclonal to rabbit IgG at 1/50000 dilution. Predicted band size: 86, 82, 94 kDa. Observed band size: 86 kDa.



Immunofluorescent analysis of A549 cells using PACO47590 at dilution of 1:100 and Alexa Fluor 488-conjugated AffiniPure Goat Anti-Rabbit IgG(H+L).



Immunohistochemistry of paraffin-embedded human endometrial cancer using PACO47590 at dilution of 1:100.