

## Product Information

**Size:**

50ug

**Reactivity:**

Human

**Source:**

Rabbit

**Isotype:**

IgG

**Applications:**

ELISA, IHC

**Recommended dilutions:**

ELISA:1:2000-1:10000, IHC:1:20-1:200

**Protein Background:**

Binds GTP but lacks intrinsic GTPase activity and is resistant to Rho-specific GTPase-activating proteins.

**Gene ID:**

RND3

**Uniprot**

P61587

**Synonyms:**

Rho-related GTP-binding protein RhoE (Protein MemB) (Rho family GTPase 3) (Rho-related GTP-binding protein Rho8) (Rnd3), RND3, ARHE RHO8 RHOE

**Immunogen:**

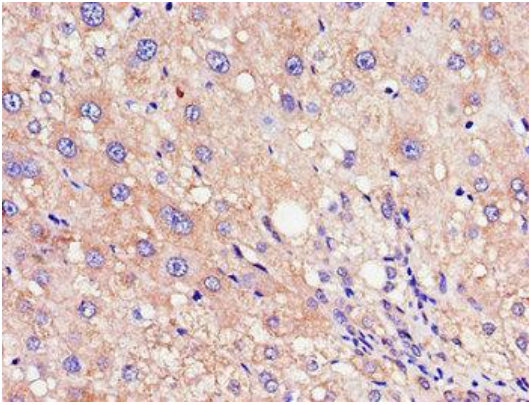
Recombinant Human Rho-related GTP-binding protein RhoE protein (152-239AA).

**Storage:**

Preservative: 0.03% Proclin 300. Constituents: 50% Glycerol, 0.01M PBS, PH 7.4

## Product Images

---



Immunohistochemistry of paraffin-embedded human liver cancer using PACO47618 at dilution of 1:100.