

SCGB1A1 Antibody



PACO47630

Product Information

Size:

50ug

Reactivity:

Human

Source:

Rabbit

Isotype:

IgG

Applications:

ELISA, IF

Recommended dilutions:

ELISA:1:2000-1:10000, IF:1:50-1:200

Protein Background:

Binds phosphatidylcholine, phosphatidylinositol, polychlorinated biphenyls (PCB) and weakly progesterone, potent inhibitor of phospholipase A2.

Gene ID:

SCGB1A1

Uniprot

P11684

Synonyms:

Uteroglobin (Clara cell phospholipid-binding protein) (CCPBP) (Clara cells 10 kDa secretory protein) (CC10) (Secretoglobin family 1A member 1) (Urinary protein 1) (UP-1) (UP1) (Urine protein 1), SCGB1A1, CC10 CCSP UGB

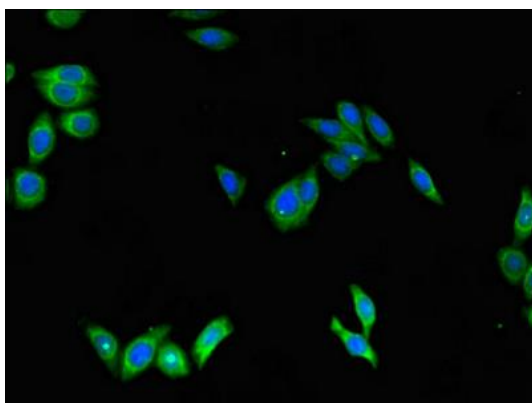
Immunogen:

Recombinant Human Uteroglobin protein (22-91AA).

Storage:

Preservative: 0.03% Proclin 300. Constituents: 50% Glycerol, 0.01M PBS, PH 7.4

Product Images



Immunofluorescent analysis of HepG2 cells using PACO47630 at dilution of 1:100 and Alexa Fluor 488-conjugated AffiniPure Goat Anti-Rabbit IgG(H+L).