

PACO47638

Product Information

Size:

50ug

Reactivity:

Human, Mouse

Source:

Rabbit

Isotype:

IgG

Applications:

ELISA, WB, IHC, IF

Recommended dilutions:

ELISA:1:2000-1:10000, WB:1:2000-1:10000,
IHC:1:20-1:200, IF:1:50-1:200

Protein Background:

Serine/threonine-protein kinase which is involved in the regulation of a wide variety of ion channels, membrane transporters, cellular enzymes, transcription factors, neuronal excitability, cell growth, proliferation, survival, migration and apoptosis. Plays an important role in cellular stress response. Contributes to regulation of renal Na⁺ retention, renal K⁺ elimination, salt appetite, gastric acid, secretion, intestinal Na⁺/H⁺ exchange and nutrient transport, insulin-dependent salt sensitivity of blood pressure, salt sensitivity of peripheral glucose uptake, cardiac repolarization and memory consolidation.

Gene ID:

SGK1

Uniprot

O00141

Synonyms:

Serine/threonine-protein kinase Sgk1 (EC 2.7.11.1) (Serum/glucocorticoid-regulated kinase 1), SGK1, SGK

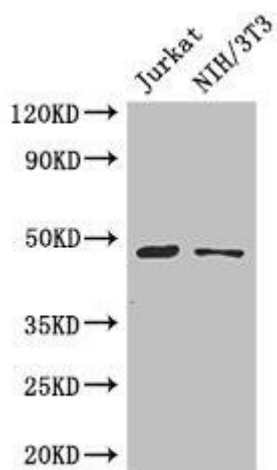
Immunogen:

Recombinant Human Serine/threonine-protein kinase Sgk1 protein (247-406AA).

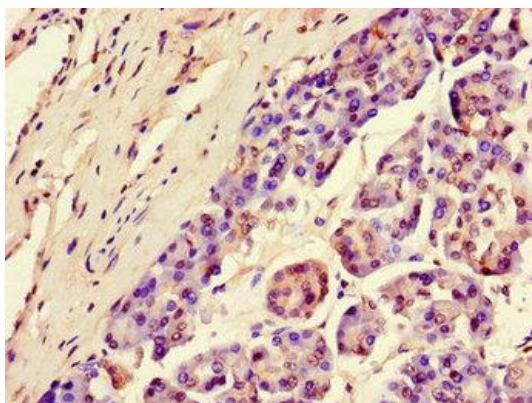
Storage:

Preservative: 0.03% Proclin 300. Constituents: 50% Glycerol, 0.01M PBS, PH 7.4

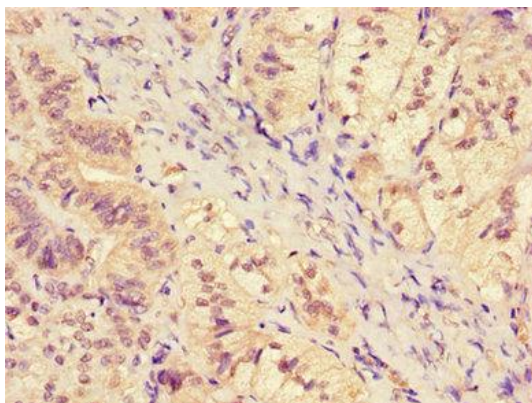
Product Images



Western Blot. Positive WB detected in: Jurkat whole cell lysate, NIH/3T3 whole cell lysate. All lanes: SGK1 antibody at 3 μ g/ml. Secondary: Goat polyclonal to rabbit IgG at 1/50000 dilution. Predicted band size: 49, 60, 51, 48, 53 kDa. Observed band size: 49 kDa.



Immunohistochemistry of paraffin-embedded human pancreatic tissue using PACO47638 at dilution of 1:100.



Immunohistochemistry of paraffin-embedded human adrenal gland tissue using PACO47638 at dilution of 1:100.