

SLC18A1 Antibody



PACO47654

Product Information

Size:

50ug

Reactivity:

Human, Mouse

Source:

Rabbit

Isotype:

IgG

Applications:

ELISA, WB, IHC

Recommended dilutions:

ELISA:1:2000-1:10000, WB:1:1000-1:5000,
IHC:1:20-1:200

Protein Background:

Involved in the transport of biogenic monoamines, such as serotonin, from the cytoplasm into the secretory vesicles of neuroendocrine and endocrine cells.

Gene ID:

SLC18A1

Uniprot

P54219

Synonyms:

Chromaffin granule amine transporter (Solute carrier family 18 member 1) (Vesicular amine transporter 1) (VAT1), SLC18A1, VAT1 VMAT1

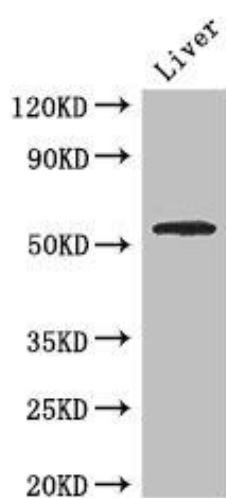
Immunogen:

Recombinant Human Chromaffin granule amine transporter protein (66-120AA).

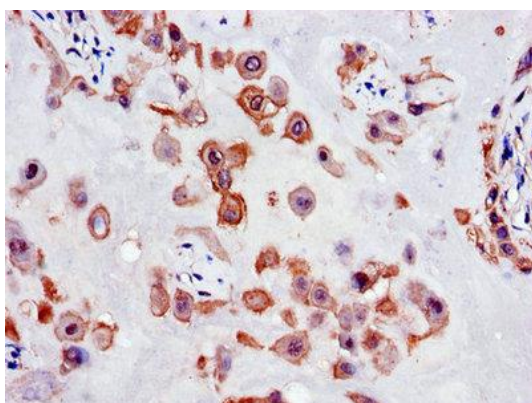
Storage:

Preservative: 0.03% Proclin 300. Constituents: 50% Glycerol, 0.01M PBS, PH 7.4

Product Images



Western Blot. Positive WB detected in: Mouse liver tissue. All lanes: SLC18A1 antibody at 2.7 μ g/ml. Secondary. Goat polyclonal to rabbit IgG at 1/50000 dilution. Predicted band size: 57, 51, 53 kDa. Observed band size: 57 kDa.



Immunohistochemistry of paraffin-embedded human placenta tissue using PACO47654 at dilution of 1:100.