

SLC37A1 Antibody



PACO47666

Product Information

Size:

50ug

Reactivity:

Human

Source:

Rabbit

Isotype:

IgG

Applications:

ELISA, IHC, IF

Recommended dilutions:

ELISA:1:2000-1:10000, IHC:1:20-1:200,
IF:1:50-1:200

Protein Background:

Inorganic phosphate and glucose-6-phosphate antiporter. May transport cytoplasmic glucose-6-phosphate into the lumen of the endoplasmic reticulum and translocate inorganic phosphate into the opposite direction. Independent of a luminal glucose-6-phosphatase. May not play a role in homeostatic regulation of blood glucose levels.

Gene ID:

SLC37A1

Uniprot

P57057

Synonyms:

Glucose-6-phosphate exchanger SLC37A1 (Glycerol-3-phosphate permease) (G-3-P permease) (Solute carrier family 37 member 1), SLC37A1, G3PP

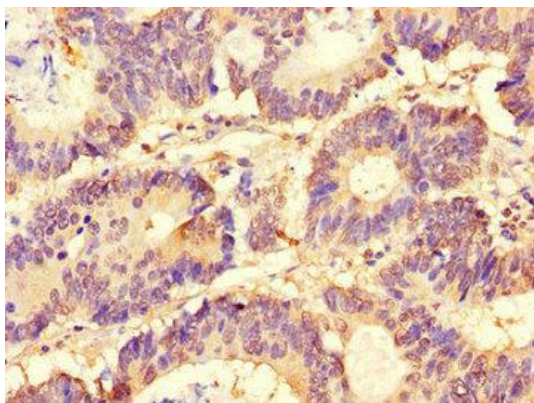
Immunogen:

Recombinant Human Glucose-6-phosphate exchanger SLC37A1 protein (245-302AA).

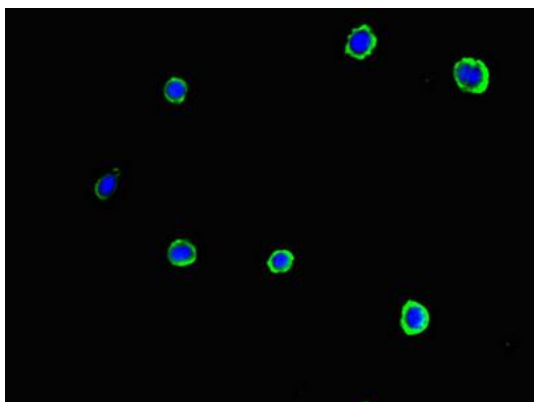
Storage:

Preservative: 0.03% Proclin 300. Constituents: 50% Glycerol, 0.01M PBS, PH 7.4

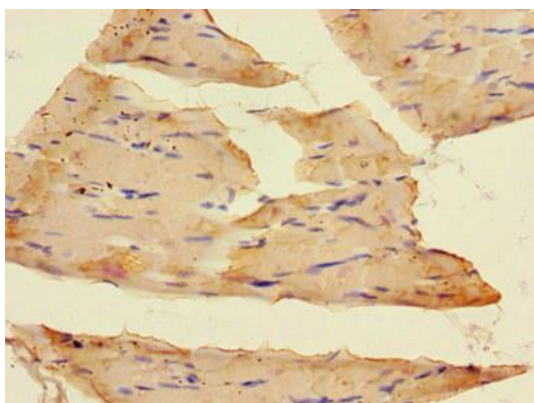
Product Images



Immunohistochemistry of paraffin-embedded human colon cancer using PACO47666 at dilution of 1:100.



Immunofluorescent analysis of MCF-7 cells using PACO47666 at dilution of 1:100 and Alexa Fluor 488-conjugated AffiniPure Goat Anti-Rabbit IgG(H+L).



Immunohistochemistry of paraffin-embedded human skeletal muscle tissue using PACO47666 at dilution of 1:100.