

PACO47762

---

## Product Information

**Size:**

50ug

**Reactivity:**

Human, Mouse

**Source:**

Rabbit

**Isotype:**

IgG

**Applications:**

ELISA, WB, IHC, IF

**Recommended dilutions:**

ELISA:1:2000-1:10000, WB:1:1000-1:5000,  
IHC:1:20-1:200, IF:1:50-1:200

**Protein Background:**

Binds to the Fc region of immunoglobulins gamma. Low affinity receptor. By binding to IgG it initiates cellular responses against pathogens and soluble antigens. Promotes phagocytosis of opsonized antigens.

**Gene ID:**

FCGR2A

**Uniprot**

P12318

**Synonyms:**

Low affinity immunoglobulin gamma Fc region receptor II-a (IgG Fc receptor II-a) (CDw32) (Fc-gamma RII-a) (Fc-gamma-RIIa) (FcRII-a) (CD antigen CD32), FCGR2A, CD32, FCG2, FCGR2A1, IGFR2

**Immunogen:**

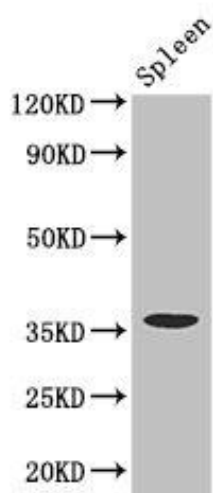
Recombinant Human Low affinity immunoglobulin &gamma; Fc region receptor II-a protein (241-317AA).

**Storage:**

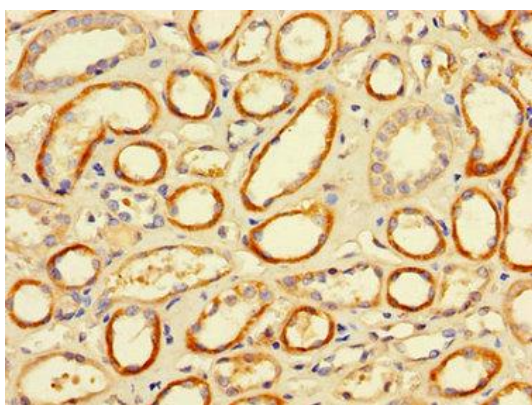
Preservative: 0.03% Proclin 300. Constituents: 50% Glycerol, 0.01M PBS, PH 7.4

## Product Images

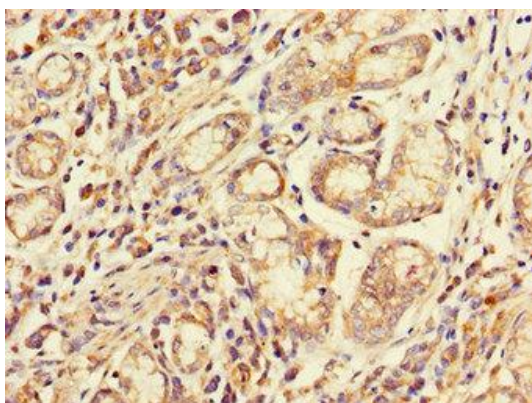
---



Western Blot. Positive WB detected in: Mouse spleen tissue. All lanes: FCGR2A antibody at 3.4µg/ml. Secondary. Goat polyclonal to rabbit IgG at 1/50000 dilution. Predicted band size: 36, 35 kDa. Observed band size: 36 kDa.



Immunohistochemistry of paraffin-embedded human kidney tissue using PACO47762 at dilution of 1:100.



Immunohistochemistry of paraffin-embedded human gastric cancer tissue using PACO47762 at dilution of 1:100.