

SWI5 Antibody



PACO47914

Product Information

Size:

50ug

Reactivity:

Human, Mouse

Source:

Rabbit

Isotype:

IgG

Applications:

ELISA, WB, IHC, IF

Recommended dilutions:

ELISA:1:2000-1:10000, WB:1:1000-1:5000,
IHC:1:20-1:200, IF:1:50-1:200

Protein Background:

Component of the SWI5-SFR1 complex, a complex required for double-strand break repair via homologous recombination.

Gene ID:

SWI5

Uniprot

Q1ZZU3

Synonyms:

DNA repair protein SWI5 homolog (HBV DNAPTP1-transactivated protein A) (Protein SAE3 homolog), SWI5, C9orf119 SAE3

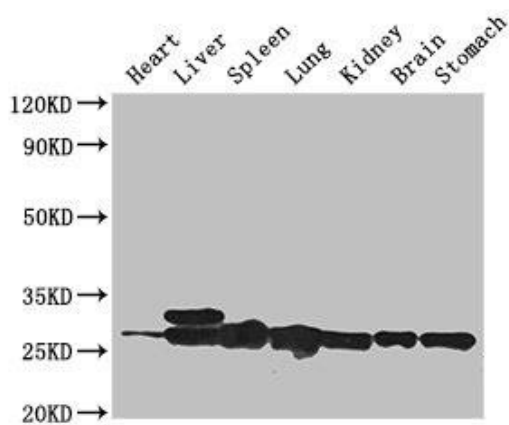
Immunogen:

Recombinant Human DNA repair protein SWI5 homolog protein (54-112AA).

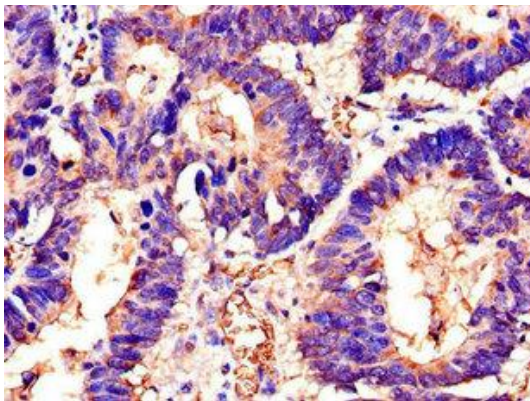
Storage:

Preservative: 0.03% Proclin 300. Constituents: 50% Glycerol, 0.01M PBS, PH 7.4

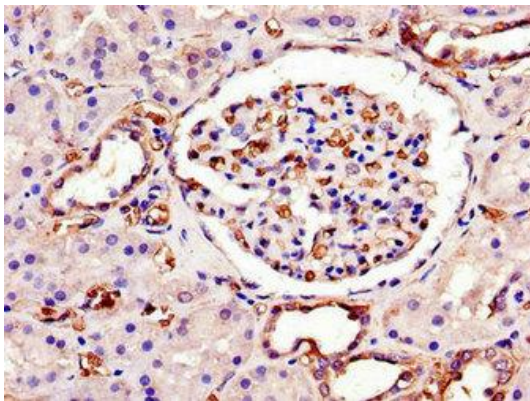
Product Images



Western Blot. Positive WB detected in: Mouse heart tissue, Mouse liver tissue, Mouse spleen tissue, Mouse lung tissue, Mouse kidney tissue, Mouse brain tissue, Mouse stomach tissue. All lanes: SWI5 antibody at 3 μ g/ml. Secondary. Goat polyclonal to rabbit IgG at 1/50000 dilution. Predicted band size: 27 kDa. Observed band size: 27, 29 kDa.



Immunohistochemistry of paraffin-embedded human colon cancer using PACO47914 at dilution of 1:100.



Immunohistochemistry of paraffin-embedded human kidney tissue using PACO47914 at dilution of 1:100.